



Comparing Kansas: Attainment

Kansas Association of School Boards / January 20, 2016

Summary

The key findings of this report comparing high school and postsecondary enrollment and completion are as follows:

- Kansas has had a higher percent of adults ages 18-24 with a high school diploma than all comparison groups besides the Aspiration states from 2000 until 2011.
- In 2012 all groups but the Distribution peers and the U.S. as a whole had higher percents of adults ages 18-24 with a high school diploma than Kansas, but Kansas once again surpassed all groups but the Aspiration states in 2013.
- Kansas had a much higher percent of 18-24 year olds enrolled in a postsecondary program than any comparison group in 2000, and in 2013 Kansas continued to exceed the average for these comparison groups with the exception of the Aspiration states.
- From 2000 to 2008, Kansas had a lower high school non-completion rate for adults age 25 and up than any of the comparison groups, and from 2008 to 2013, continued to have lower rates than the U.S. average and the student peer and population distribution peer groups.
- From 2000 to 2008, Kansas had a higher rate of adults age 25 and up with at least a high school diploma than any of the state comparison groups, and from 2008 to 2013 continued to have higher rates than the U.S. average and the Student and Population Distribution peer groups.
- From 2000 to 2013, Kansas consistently has had a lower rate of adults age 25 and up with at least a bachelor's degree than the Aspiration state group but a higher rate than all other comparison groups.
- For the rate of graduate degrees for adults ages 25 and up from 2000 to 2013, Kansas has been consistently below the Aspiration states rate, consistently above the rates for Overall, Population, and Distribution peer groups and very much in line with the U.S. average and the Student peer groups.
- Kansas had a higher percent of high school graduates enroll in a postsecondary institution than all comparison groups in 2000, and all comparison groups but the Aspiration states in 2008.
- Kansas had a higher percent of high school graduates enroll in a postsecondary institution in-state than any of the comparison groups for 2000 and 2008.
- Kansas total postsecondary enrollment made up a larger percent of the total U.S. student population than the average of the Distribution peer states, but a smaller percent than all other comparison groups from 1970 until 2000, when Kansas' percent took a noticeable decline to well under that for the Distribution peers.

Table of Contents

[Summary](#)

[Table of Contents](#)

[Introduction](#)

[18-24 Year Olds](#)

[Table 1: Percent of 18-24 Year Olds with a High School Diploma and/or Enrolled in a Postsecondary Institution](#)

[Chart 1: Percent of 18-24 Year Olds with a High School Diploma](#)

[Chart 2: Percent of 18-24 Year Olds Enrolled in a Postsecondary Institution](#)

[25 Year Olds and Up](#)

[Table 2: Percent of 25 Year Olds and Up with a High School Diploma and/or Postsecondary Degree](#)

[Chart 3: 25 Year Olds and Up - Less than a High School Diploma](#)

[Chart 4: 25 Year Olds and Up - At Least a High School Diploma](#)

[Chart 5: 25 Year Olds and Up - At Least a Bachelor's Degree](#)

[Chart 6: 25 Year Olds and Up - Graduate Degree](#)

[Chart 7: Pie Charts for Kansas and the U.S., 2000 and 2013 - Population Ages 25 and Up.](#)

[Recent High School Graduates Enrolled in Postsecondary](#)

[Table 3: Percent of High School Graduates Enrolled in Postsecondary](#)

[Chart 8: Percent of High School Graduates Enrolled in Postsecondary - Total](#)

[Chart 9: Percent of High School Graduates Enrolled in Postsecondary - In-State Only](#)

[First-Time Postsecondary Enrollment](#)

[Table 4: First-Time Postsecondary Enrollment as Percent of U.S. Total](#)

[Chart 10: First-Time Postsecondary Enrollment as Percent of U.S. Total](#)

[Total Postsecondary Enrollment](#)

[Table 5: Total Postsecondary Enrollment as Percent of U.S. Total](#)

[Chart 11: Total Postsecondary Enrollment as Percent of U.S. Total](#)

Introduction

This report presents data related to high school completion, postsecondary enrollment, and postsecondary degree completion. Using state-level data from the [Digest of Education Statistics](#), KASB compares Kansas values with those of [previously identified](#) state comparison groups:

- **Aspiration States:** Those states that outperform Kansas on a majority of student outcome measures
 - Indiana, Iowa, Massachusetts, Nebraska, New Hampshire, New Jersey, Vermont
- **Overall Peers:** Those states similar to Kansas in student and adult characteristics and population distribution
 - Alaska, Idaho, Iowa, Michigan, Missouri, Nebraska, Oregon, Pennsylvania, South Dakota, Washington, Wisconsin
- **Student Peers:** Those states similar to Kansas in student characteristics
 - Arkansas, Illinois, Michigan, Missouri, Oregon, Rhode Island, Virginia, Washington, Wisconsin
- **Population Peers:** Those states similar to Kansas in adult characteristics
 - Alaska, Illinois, Iowa, Michigan, Missouri, Nebraska, Oregon, Pennsylvania, South Dakota, Utah, Vermont, Washington, Wisconsin
- **Distribution Peers:** Those states similar to Kansas in population distribution
 - Alaska, Idaho, Indiana, Iowa, Minnesota, Missouri, New Mexico, North Dakota, Oklahoma, South Dakota, Wisconsin

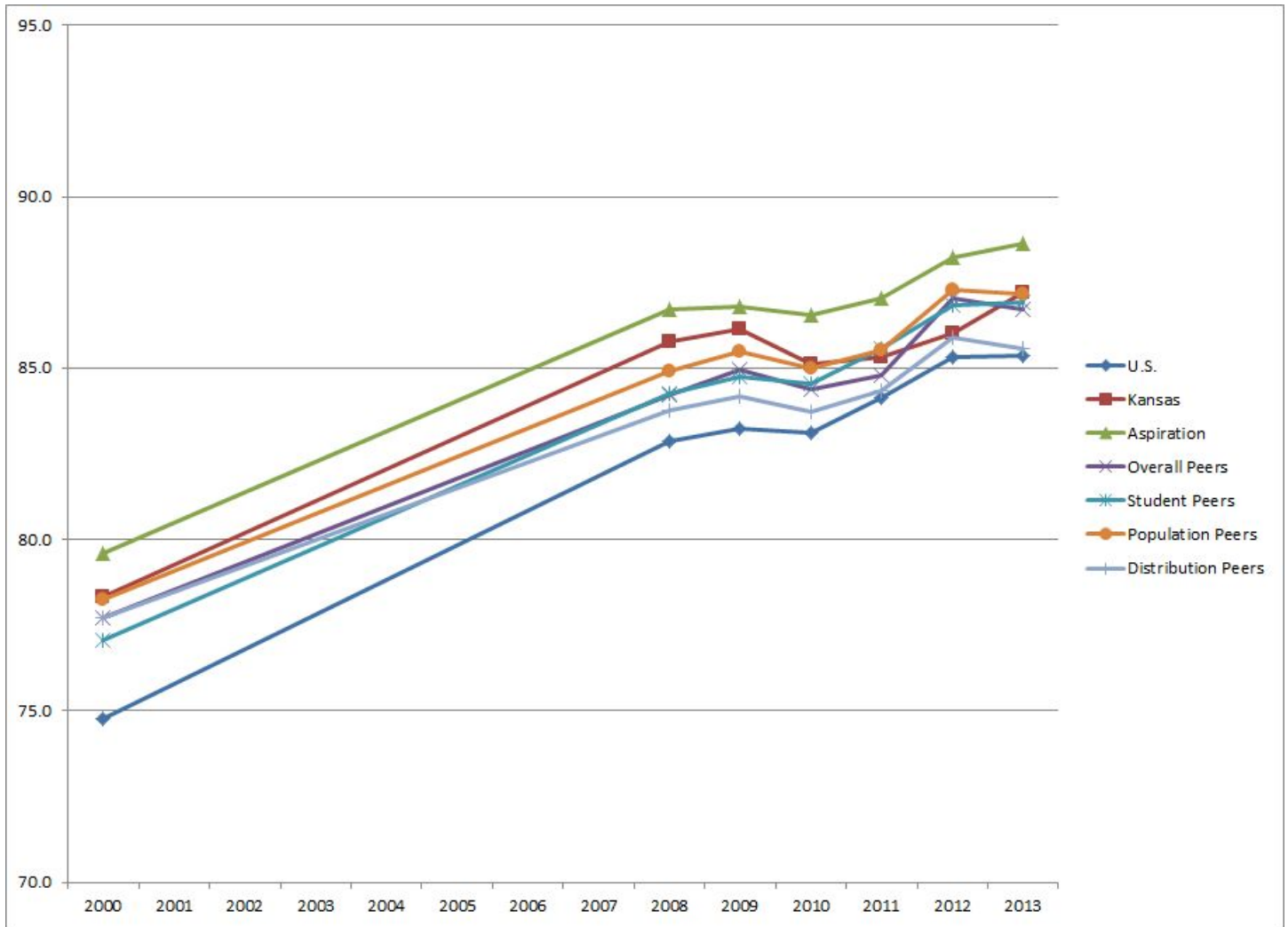
18-24 Year Olds

The first set of statistics looks at the percent of each state's population ages 18-24 that have completed high school and/or enrolled in a postsecondary program, as shown in Table 1 and Charts 1 and 2.

Table 1: Percent of 18-24 Year Olds with a High School Diploma and/or Enrolled in a Postsecondary Institution

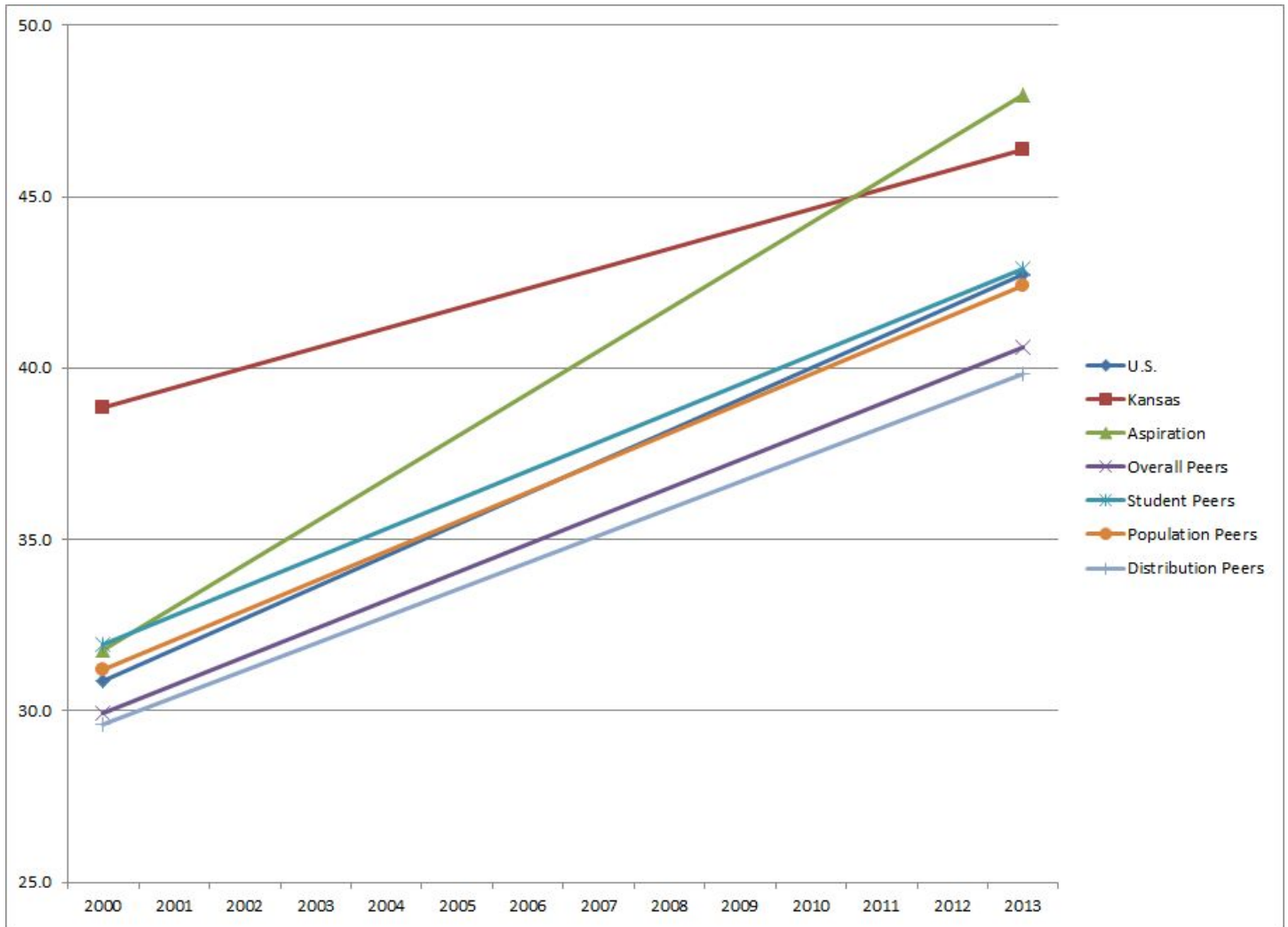
	High School Completion							Postsecondary Enrollment	
	2000	2008	2009	2010	2011	2012	2013	2000	2013
U.S.	74.7	82.9	83.2	83.1	84.1	85.3	85.3	30.9	42.7
Kansas	78.3	85.8	86.1	85.1	85.3	86.0	87.2	38.8	46.4
Aspiration	79.6	86.7	86.8	86.5	87.0	88.2	88.6	31.8	48.0
Overall Peers	77.7	84.2	84.9	84.4	84.8	87.0	86.7	29.9	40.6
Student Peers	77.0	84.3	84.7	84.6	85.6	86.8	86.9	31.9	42.9
Population Peers	78.2	84.9	85.5	85.0	85.5	87.3	87.2	31.2	42.4
Distribution Peers	77.7	83.8	84.2	83.7	84.3	85.9	85.6	29.6	39.8

Chart 1: Percent of 18-24 Year Olds with a High School Diploma



As the data shows, Kansas has had a higher percent of students graduate high school than all comparison groups besides the Aspiration states until 2011, when the student and population peer groups' averages rose above Kansas. In 2012 all groups but the Distribution peers and the U.S. average were higher than Kansas, but Kansas once again surpassed all groups but the Aspiration states in 2013.

Chart 2: Percent of 18-24 Year Olds Enrolled in a Postsecondary Institution



There were only two dates available for the postsecondary enrollment data, but this data shows that Kansas had a much higher percent of 18-24 year olds enrolled in a postsecondary program than any comparison group in 2000, and in 2013 Kansas continued to exceed the average for these comparison groups with the exception of the Aspiration states.

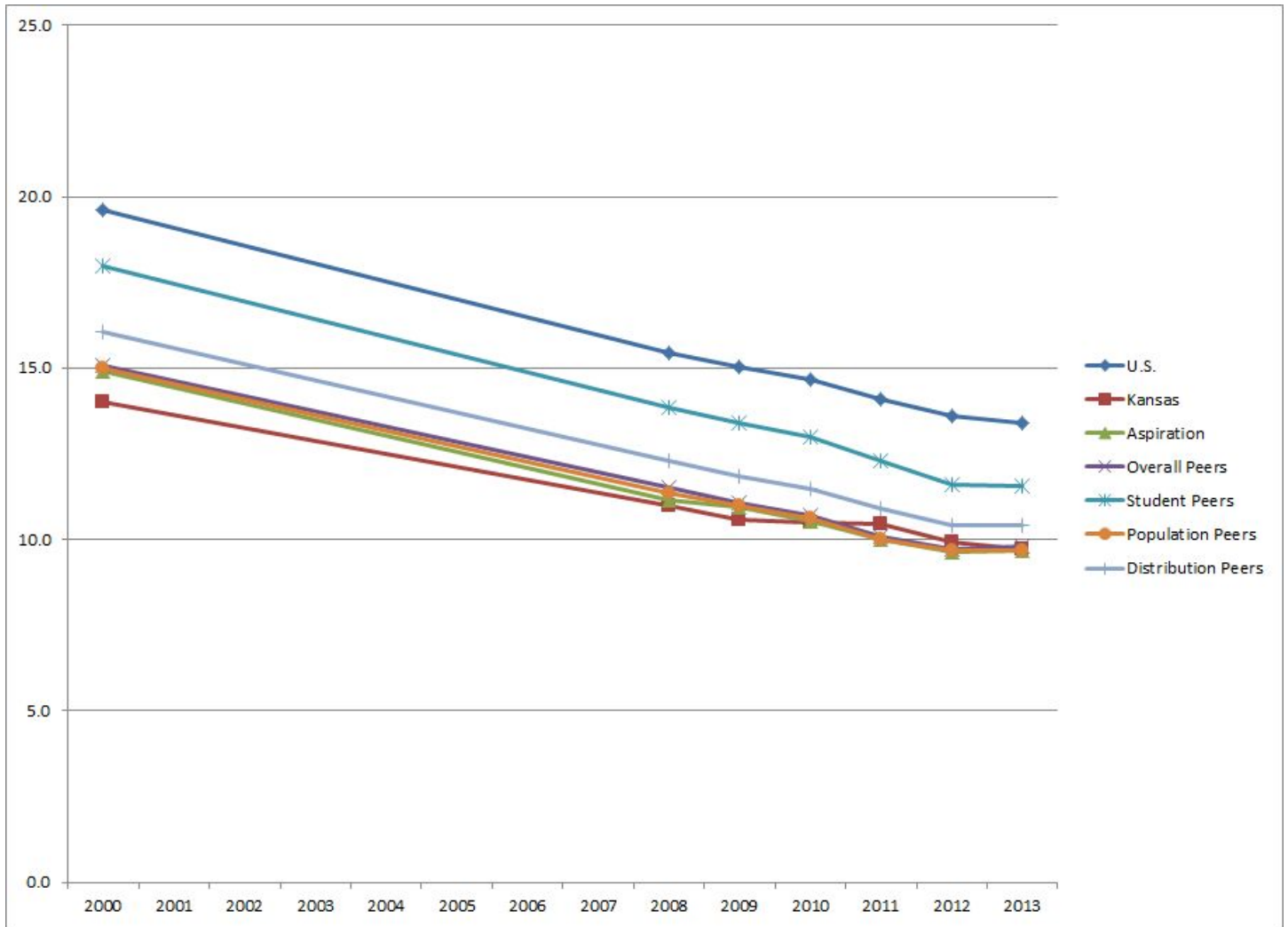
25 Year Olds and Up

The next set of statistics looks at the percent of each state's population ages 25 and up that have completed high school and/or completed a postsecondary program, as shown in Table 2 and Charts 3 through 7.

Table 2: Percent of 25 Year Olds and Up with a High School Diploma and/or Postsecondary Degree

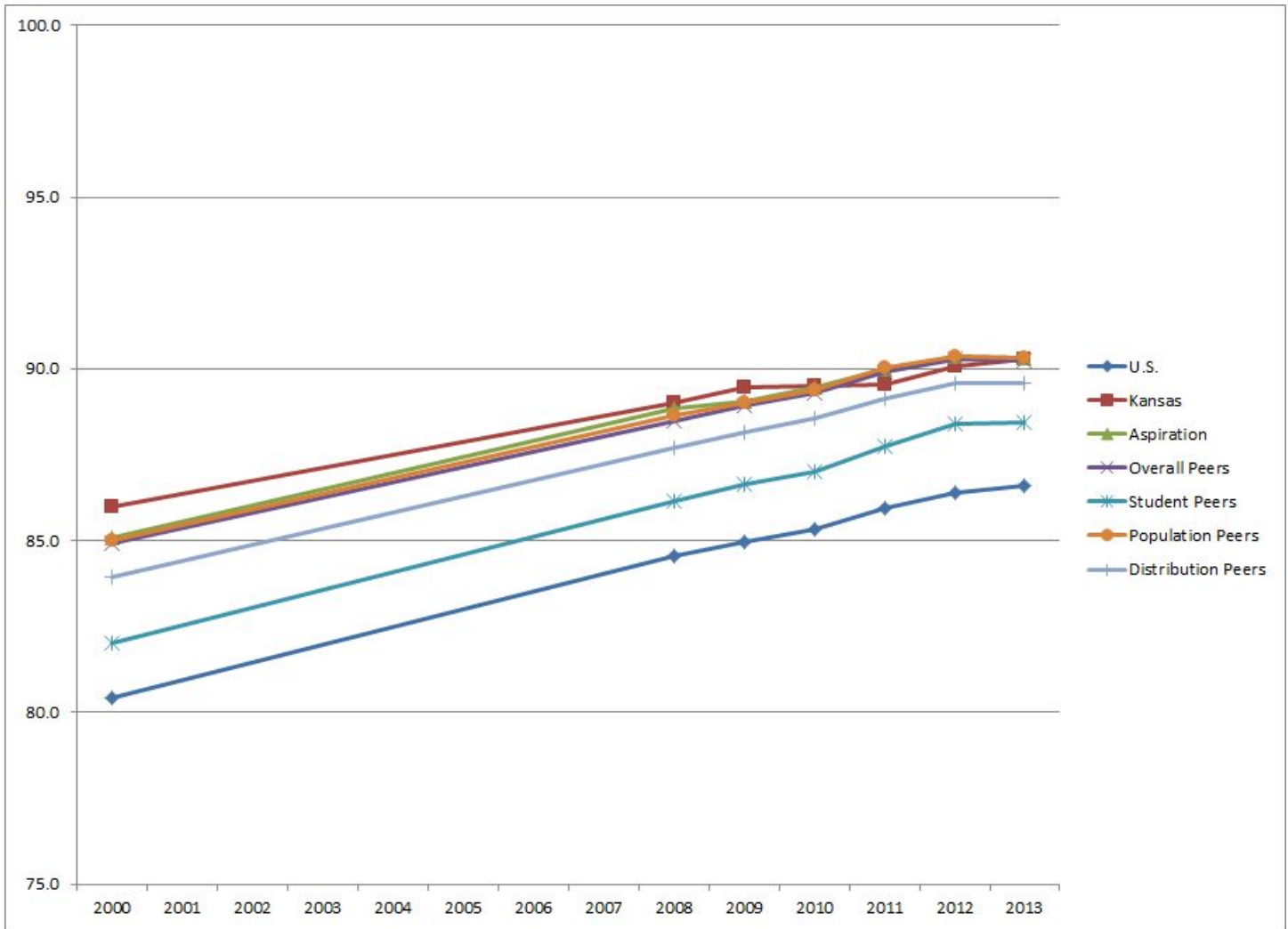
	Less than High School						
	<i>2000</i>	<i>2008</i>	<i>2009</i>	<i>2010</i>	<i>2011</i>	<i>2012</i>	<i>2013</i>
U.S.	19.6	15.4	15.0	14.7	14.1	13.6	13.4
Kansas	14.0	11.0	10.6	10.5	10.4	9.9	9.7
Aspiration	14.9	11.1	10.9	10.6	10.0	9.6	9.7
Overall Peers	15.1	11.5	11.1	10.7	10.1	9.7	9.8
Student Peers	18.0	13.9	13.4	13.0	12.3	11.6	11.6
Population Peers	15.0	11.3	11.0	10.6	10.0	9.7	9.7
Distribution Peers	16.0	12.3	11.8	11.5	10.9	10.4	10.4
	High School Completion						
	<i>2000</i>	<i>2008</i>	<i>2009</i>	<i>2010</i>	<i>2011</i>	<i>2012</i>	<i>2013</i>
U.S.	56.0	57.1	57.2	57.3	57.4	57.2	57.0
Kansas	60.2	59.9	59.9	59.7	59.1	59.9	59.4
Aspiration	58.6	58.7	58.7	58.7	58.3	58.1	58.1
Overall Peers	61.9	62.6	62.7	62.6	62.9	62.3	61.9
Student Peers	58.0	59.0	59.1	59.2	59.2	59.4	58.8
Population Peers	60.9	61.5	61.6	61.5	61.6	61.2	60.9
Distribution Peers	61.6	62.6	62.9	62.8	63.1	62.6	62.6
	Bachelors						
	<i>2000</i>	<i>2008</i>	<i>2009</i>	<i>2010</i>	<i>2011</i>	<i>2012</i>	<i>2013</i>
U.S.	15.5	17.3	17.6	17.7	17.9	18.3	18.4
Kansas	17.1	19.3	19.5	19.6	20.0	19.3	19.7
Aspiration	16.9	19.2	19.3	19.5	19.8	20.3	20.1
Overall Peers	15.4	17.0	17.2	17.5	17.5	18.0	18.5
Student Peers	15.5	17.2	17.4	17.5	17.7	18.0	18.5
Population Peers	15.9	17.6	17.8	18.1	18.2	18.7	19.0
Distribution Peers	15.0	16.8	17.0	17.2	17.1	17.6	18.0
	Graduate Degree						
	<i>2000</i>	<i>2008</i>	<i>2009</i>	<i>2010</i>	<i>2011</i>	<i>2012</i>	<i>2013</i>
U.S.	8.9	10.1	10.2	10.4	10.7	10.9	11.2
Kansas	8.7	9.9	10.0	10.2	10.5	10.9	11.2
Aspiration	9.5	11.0	11.0	11.3	11.8	12.0	12.1
Overall Peers	7.7	8.9	9.0	9.1	9.6	9.9	9.8
Student Peers	8.6	10.0	10.2	10.3	10.8	11.0	11.2
Population Peers	8.2	9.5	9.6	9.7	10.3	10.5	10.5
Distribution Peers	7.3	8.3	8.3	8.5	8.9	9.4	9.0

Chart 3: 25 Year Olds and Up - Less than a High School Diploma



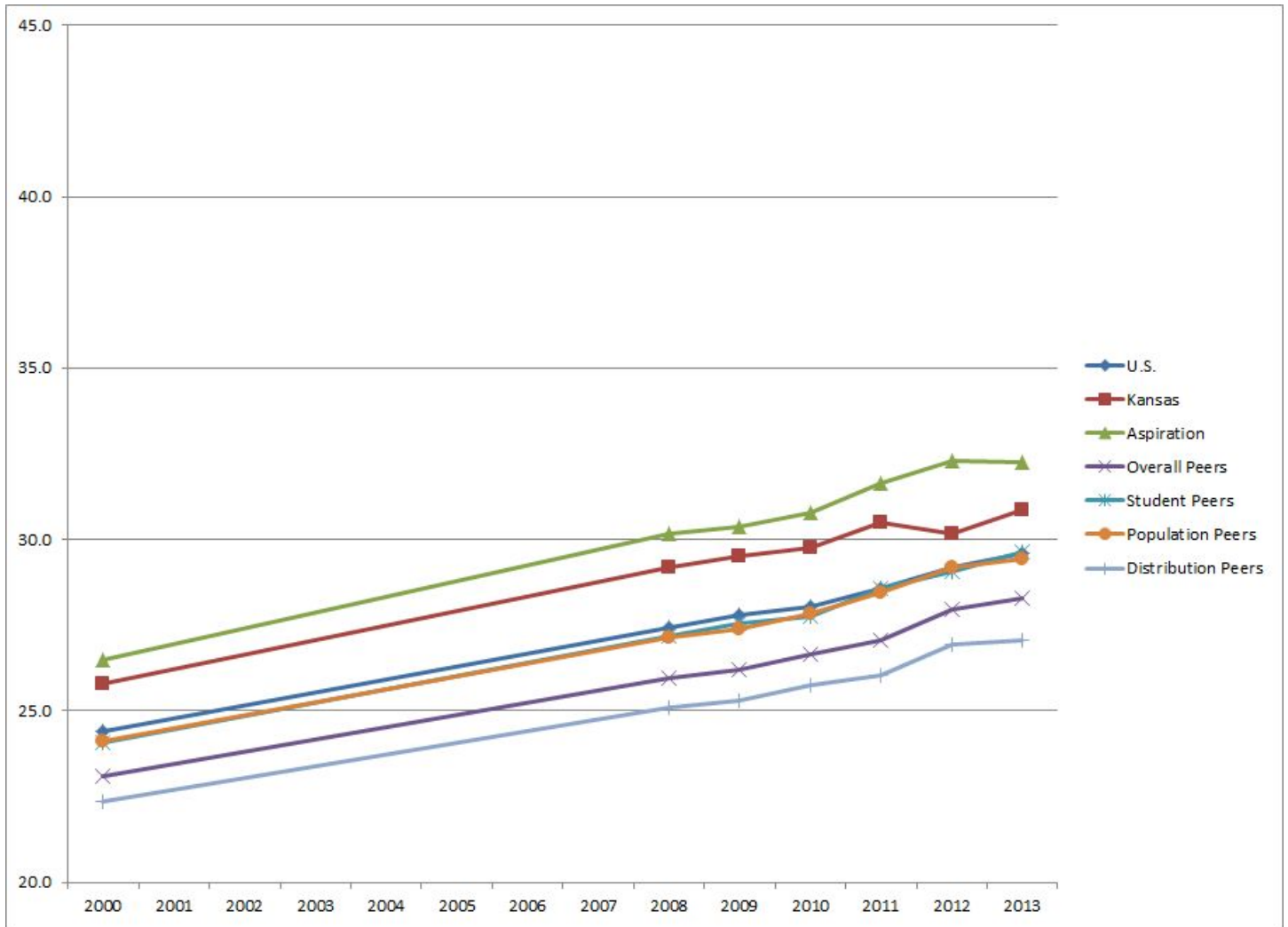
From 2000 to 2008, Kansas had a lower high school non-completion rate for adults age 25 and up than any of the comparison groups, and from 2008 to 2013, continued to have lower rates than the U.S. average and the student peer and population distribution peer groups.

Chart 4: 25 Year Olds and Up - At Least a High School Diploma



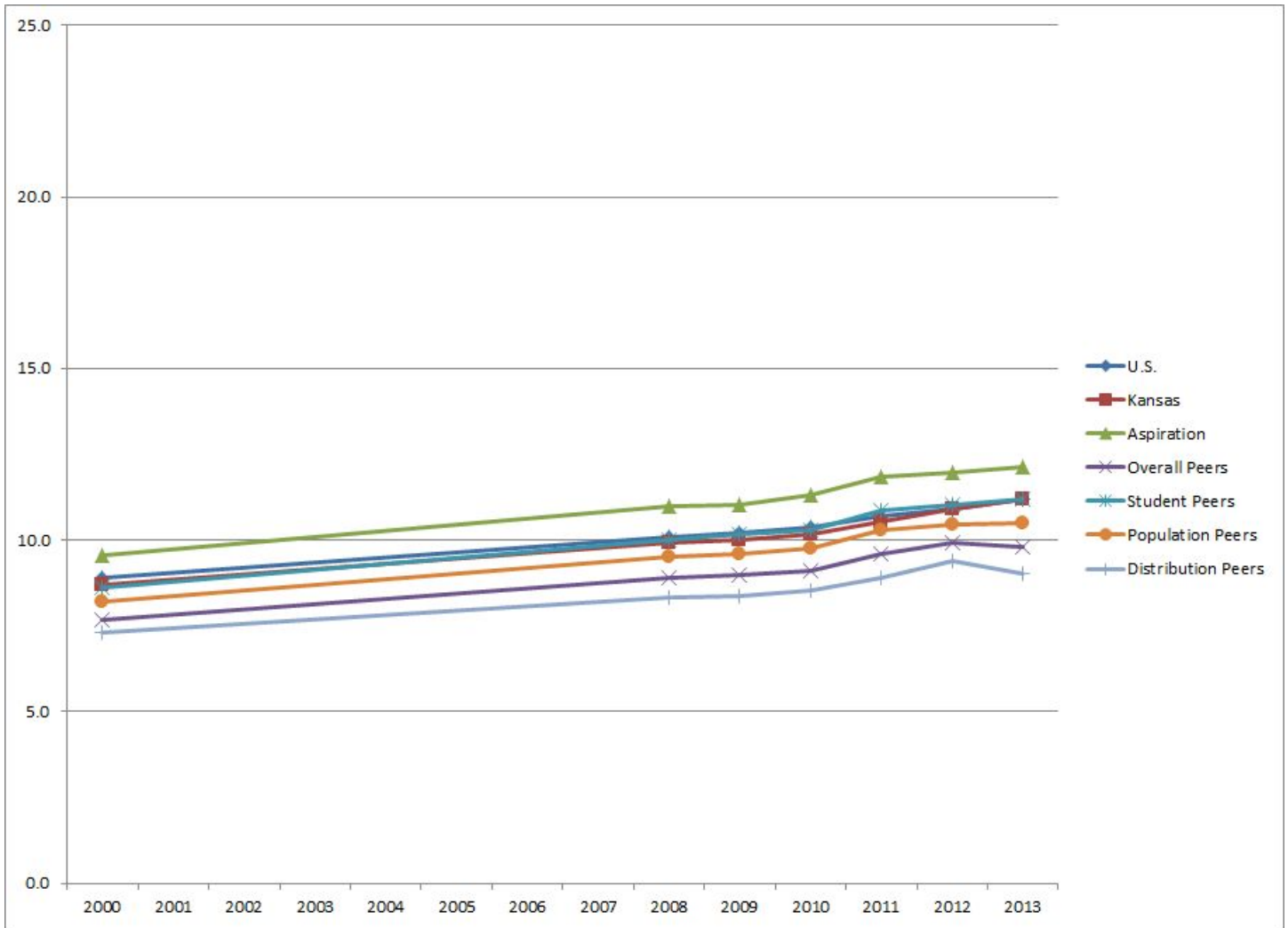
On the other side of this equation, from 2000 to 2008, Kansas had a higher rate of adults age 25 and up with at least a high school diploma than any of the state comparison groups, and from 2008 to 2013 continued to have higher rates than the U.S. average and the student peer and population distribution peer groups.

Chart 5: 25 Year Olds and Up - At Least a Bachelor's Degree



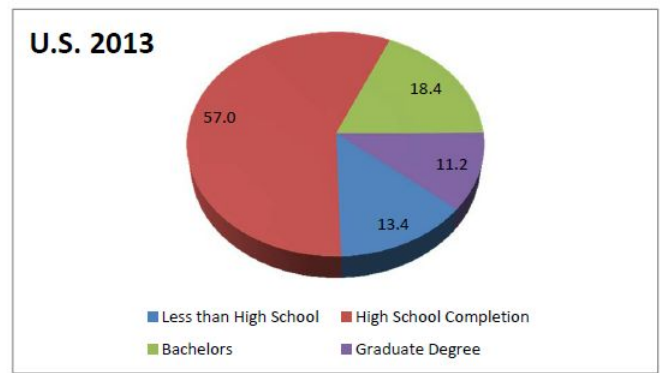
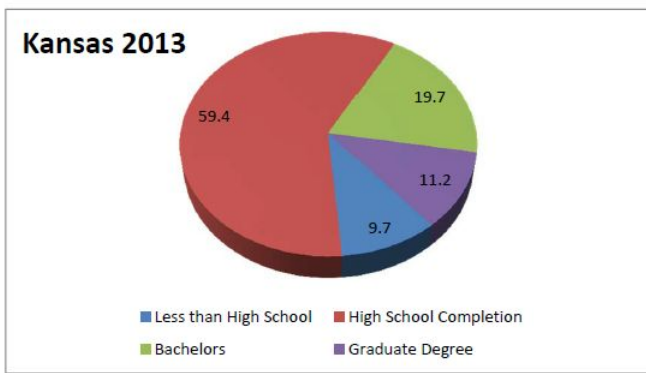
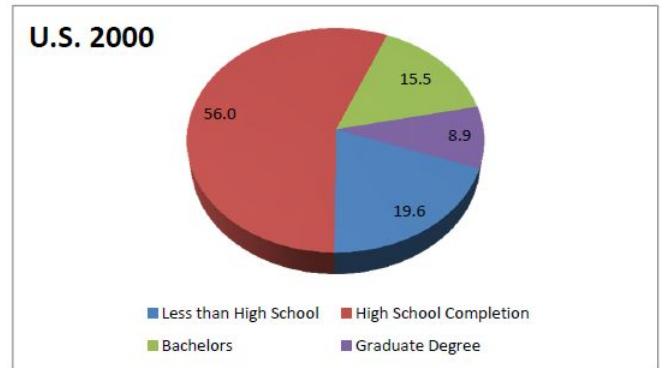
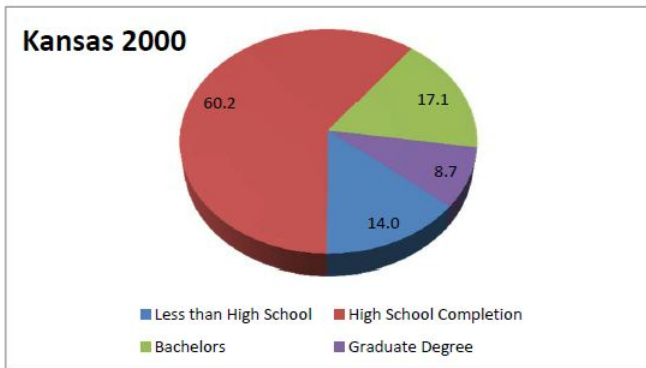
From 2000 to 2013, Kansas consistently has had a lower rate of adults age 25 and up with at least a bachelor's degree than the Aspiration state group but a higher rate than all other comparison groups.

Chart 6: 25 Year Olds and Up - Graduate Degree



For the rate of graduate degrees during this same period, Kansas has been consistently below the Aspiration states rate and consistently above the rates for Overall, Population, and Distribution peer groups and very much in line with the U.S. average and the Student peer groups.

Chart 7: Pie Charts for Kansas and the U.S., 2000 and 2013 - Population Ages 25 and Up.



As the pie charts above show, the decrease in the percent of Kansans with at less than a high school diploma from 2000 to 2013 is much more pronounced than that for the U.S. as a whole. Further, as of 2013, Kansas has a lower percent of the population ages 25 and up with less than a high school diploma, a higher percent with high school diplomas, a higher percent with bachelor’s degrees, and the same percent with graduate degrees compared to the nation as a whole.

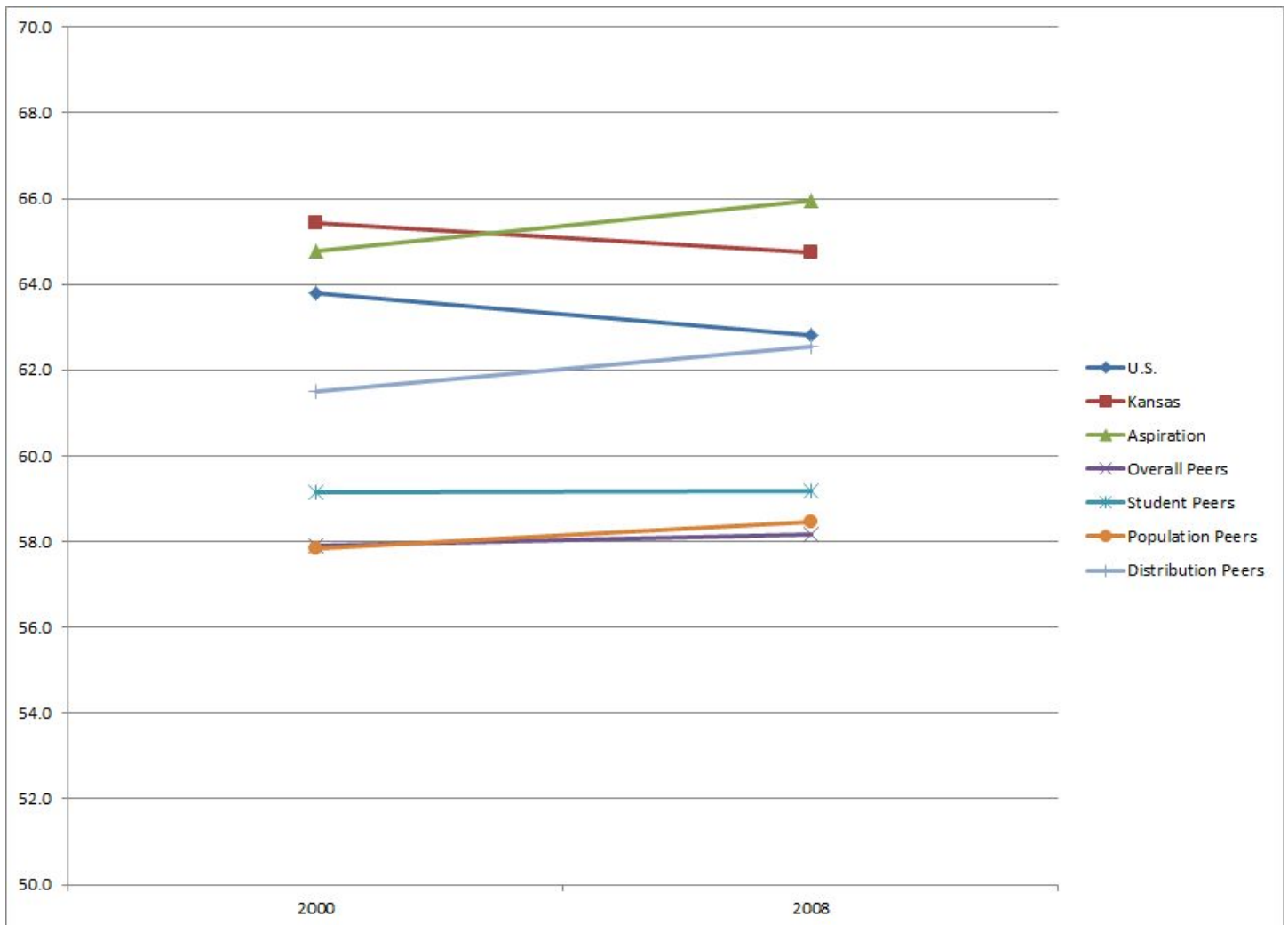
Recent High School Graduates Enrolled in Postsecondary

The next set of data looks at the percent of high school graduates from a particular school year that have enrolled in a postsecondary institution, as can be seen in Table 3 and Charts 8 and 9.

Table 3: Percent of High School Graduates Enrolled in Postsecondary

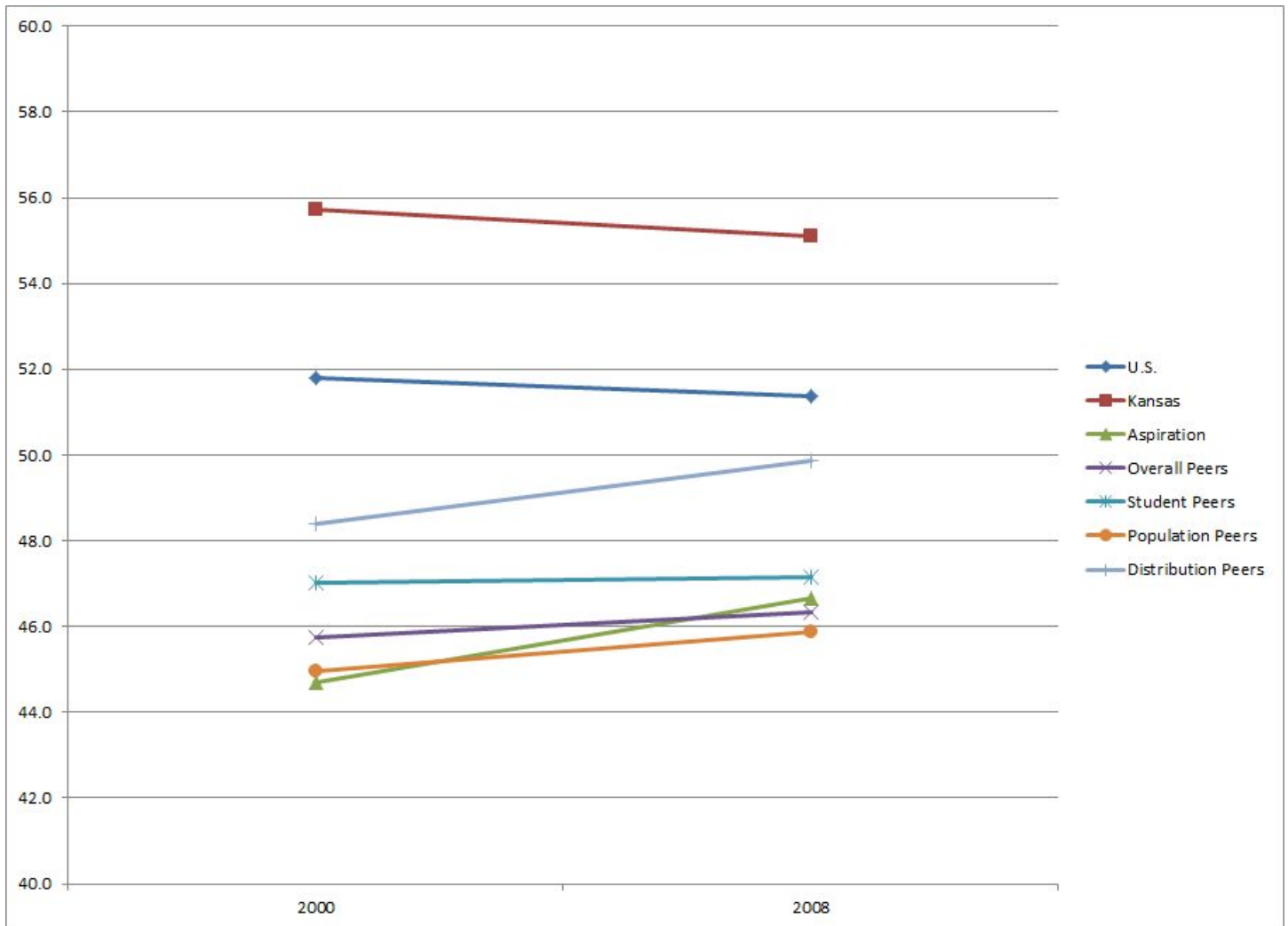
	Total		In State	
	2000	2008	2000	2008
U.S.	63.8	62.8	51.8	51.4
Kansas	65.4	64.7	55.7	55.1
Aspiration	64.8	65.9	44.7	46.7
Overall Peers	57.9	58.2	45.7	46.3
Student Peers	59.1	59.2	47.0	47.1
Population Peers	57.8	58.5	45.0	45.9
Distribution Peers	61.5	62.6	48.4	49.9

Chart 8: Percent of High School Graduates Enrolled in Postsecondary - Total



Kansas had a higher percent of high school graduates enroll in a postsecondary institution than all comparison groups in 2000, and all comparison groups but the Aspiration states in 2008.

Chart 9: Percent of High School Graduates Enrolled in Postsecondary - In-State Only



Kansas had a higher percent of high school graduates enroll in a postsecondary institution in-state than any of the comparison groups for both periods.

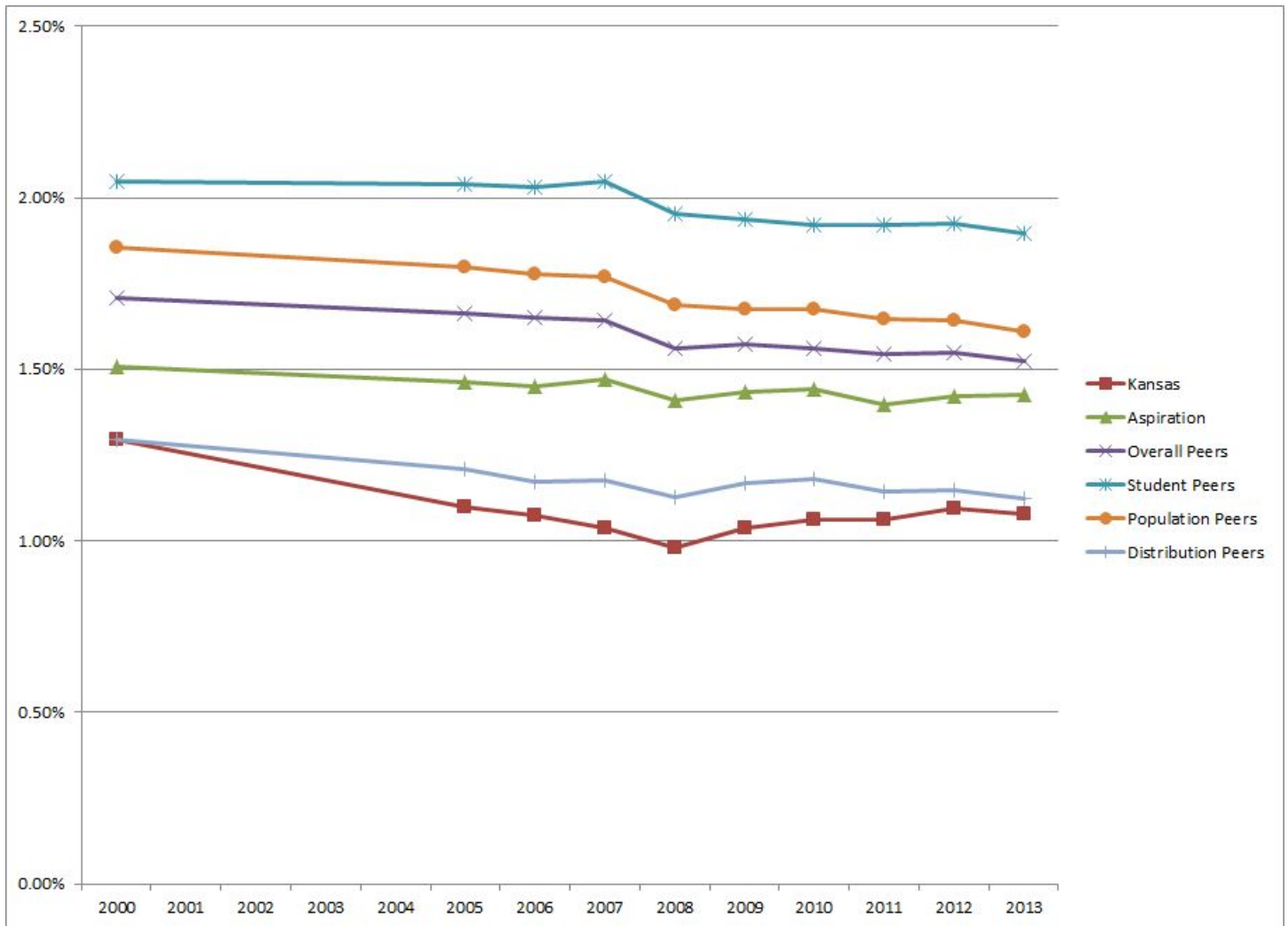
First-Time Postsecondary Enrollment

The next set of data looks at the number of students enrolled as first-time students (or freshmen) by state; expressed as a percent of the total number of first-time postsecondary students in the U.S. for that year. This data can be seen in Table 4 and Chart 10.

Table 4: First-Time Postsecondary Enrollment as Percent of U.S. Total

	2000	2005	2006	2007	2008	2009	2010	2011	2012	2013
Kansas	1.29%	1.10%	1.07%	1.04%	0.98%	1.04%	1.06%	1.06%	1.09%	1.08%
Aspiration	1.51%	1.46%	1.45%	1.47%	1.41%	1.43%	1.44%	1.40%	1.42%	1.43%
Overall Peers	1.71%	1.66%	1.65%	1.64%	1.56%	1.57%	1.56%	1.55%	1.55%	1.52%
Student Peers	2.05%	2.04%	2.03%	2.05%	1.95%	1.94%	1.92%	1.92%	1.93%	1.89%
Population Peers	1.85%	1.80%	1.78%	1.77%	1.69%	1.68%	1.67%	1.65%	1.64%	1.61%
Distribution Peers	1.30%	1.21%	1.17%	1.18%	1.13%	1.17%	1.18%	1.14%	1.15%	1.12%

Chart 10: First-Time Postsecondary Enrollment as Percent of U.S. Total



Kansas freshmen enrollment as a percent of the U.S. total has been consistently below all other comparison groups. The percent shows a decline from 2000 through 2008, then an increase from 2008 through 2012, and an apparent downturn from 2012 to 2013.

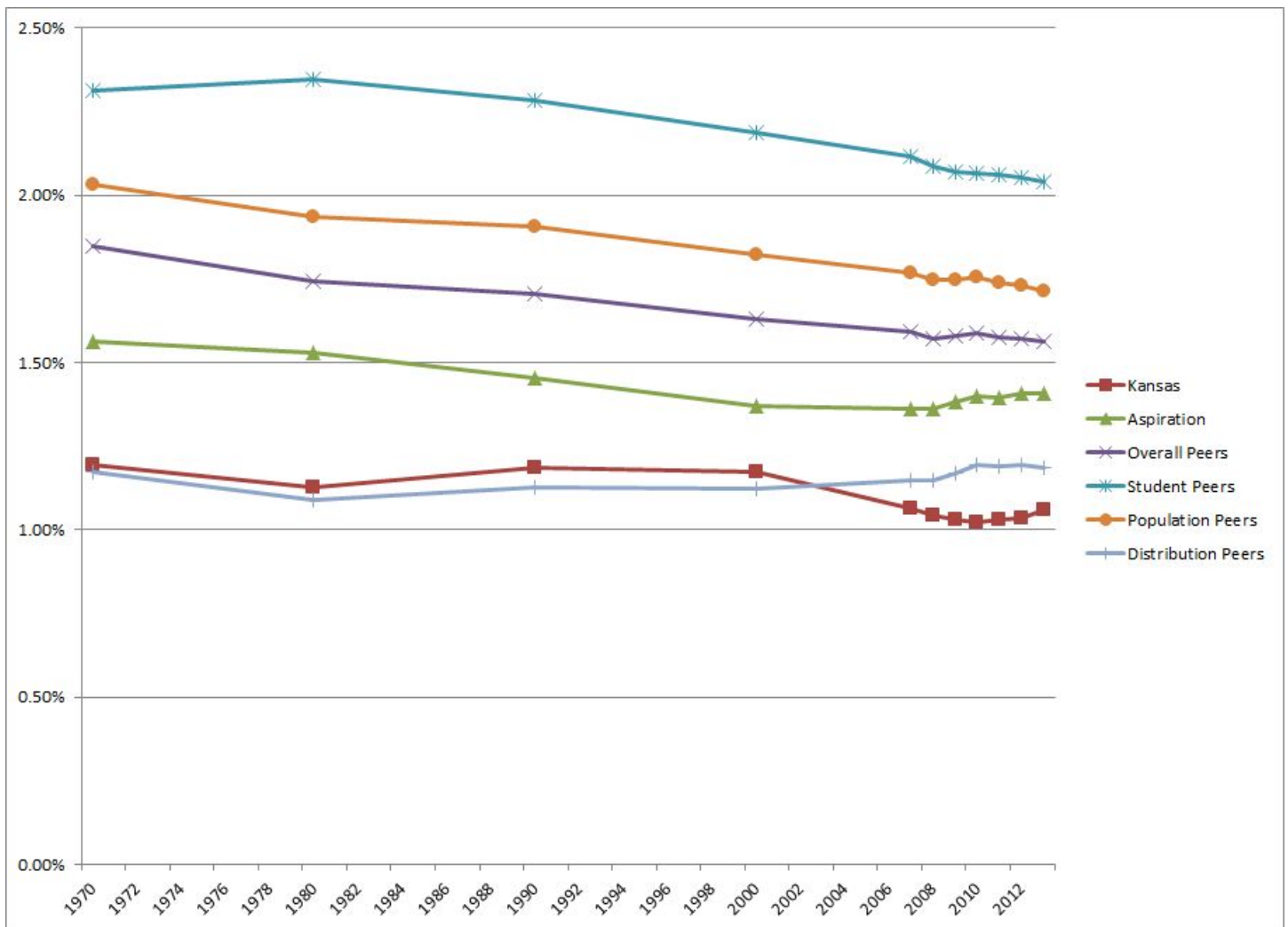
Total Postsecondary Enrollment

The last set of data looks at the total number of students enrolled by state; expressed as a percent of the total number of students in the U.S. for that year. This data can be seen in Table 5 and Chart 11.

Table 5: Total Postsecondary Enrollment as Percent of U.S. Total

	1970	1980	1990	2000	2007	2008	2009	2010	2011	2012	2013
Kansas	1.19%	1.13%	1.18%	1.18%	1.06%	1.04%	1.03%	1.02%	1.03%	1.04%	1.06%
Aspiration	1.56%	1.53%	1.45%	1.37%	1.36%	1.36%	1.38%	1.40%	1.39%	1.41%	1.41%
Overall Peers	1.85%	1.74%	1.71%	1.63%	1.59%	1.57%	1.58%	1.59%	1.57%	1.57%	1.56%
Student Peers	2.31%	2.35%	2.28%	2.19%	2.12%	2.09%	2.07%	2.07%	2.06%	2.05%	2.04%
Population Peers	2.03%	1.94%	1.91%	1.82%	1.77%	1.75%	1.75%	1.75%	1.74%	1.73%	1.72%
Distribution Peers	1.18%	1.09%	1.13%	1.12%	1.15%	1.15%	1.17%	1.20%	1.19%	1.19%	1.19%

Chart 11: Total Postsecondary Enrollment as Percent of U.S. Total



This data shows that Kansas total postsecondary enrollment historically has made up a larger percent of the total U.S. student population than the average of the Distribution peer states, but a smaller percent than all other comparison groups. This remained true until 2000, when Kansas' percent took a noticeable decline to well under that for the Distribution peers.