



KANSAS ASSOCIATION OF SCHOOL BOARDS

Serving Educational Leaders, Inspiring Student Success

2016 KASB Fees Survey Report

Ted Carter, Research Specialist - August, 2016

Introduction

This report includes the data reported by Kansas Public School Districts to the Kansas Association of School Boards related to School Fees from the 1995-96 school year through the 2015-16 school year.

The KASB Fees Survey changed format beginning with the 2016-17 school year. This report presents the data in the new format, and utilizes data formerly collected via the Calendar and Fees Surveys. Data is presented at the state level in this report, but is available by district, KASB Region, KSHSAA Class, KNEA Uniserv, and High School League at kasbresearch.org.

Key Findings

- From 2001-02 to 2015-16:
 - The percent of districts charging students for participation in extracurricular activities doubled from 15 percent to 30 percent.
 - The percent of districts reporting policies for reducing or waiving participation fees has increased from approximately 5 percent to 15 percent.
 - The average amount charged per event at the middle and high school levels has remained fairly consistent.
 - The percent of districts indicating that they offer camps, meals, and uniforms for free has decreased, providing laundry for free has remained fairly consistent, and providing transportation for free has increased.
- From 2002-03 to 2015-16:

- Districts charging admission to athletic events increased from 73 percent to 83 percent.
- Districts reporting activities income from gate receipts increased from 83 percent to 94 percent, from general fund transfers decreased from 73 percent to 61 percent, from vending machines decreased from 28 percent to 18 percent, and from concessions increased from 12 percent to 21 percent.
- Per pupil income from bookstores decreased from \$5 to \$2, from vending machines decreased from \$9 to \$4, and from concessions increased from \$17 to \$20.
- All fees show increases over time. This includes daycare, driver’s education, musical instruments, library and technology fees, per hour and per event facilities rental, shops and labs, textbooks and publications, uniforms, all-day kindergarten, and other miscellaneous items.
- From 2007-08 to 2015-16:
 - Per student participation fees increased from \$22 for middle school and \$25 for high school to \$28 and \$34 respectively.
 - High school annual admission passes have gone from approximately \$19 to \$30.
 - Middle school annual admission passes have gone from \$18 to \$26.

Contents

Introduction	1
Key Findings	1
Participation Fees.....	4
Chart 1: Districts Charging Participation Fees.....	5
Chart 2: Participation Fees.....	6
Chart 3: Type of Participation Fees.....	7
Chart 4: Participation Fees Refunds.....	8
Chart 5: Participation Fees Details.....	9
Admission Fees	10
Chart 6: Districts Charging Admission Fees.....	11
Chart 7: Admission Fees.....	12
Income	13
Chart 8: Districts Reporting Activity Income.....	14
Chart 9: Activity Budgets.....	15
Chart 10: Income from Purchases - Counts	16
Chart 11: Income from Purchases – Per Pupil Amounts.....	17
Activity Fees	18
Chart 12: Provided Free - Camps	20
Chart 13: Provided Free – Laundry	21
Chart 14: Provided Free – Meals.....	22
Chart 15: Provided Free – Transportation	23

Chart 16: Provided Free – Uniforms..... 24

Chart 17: Fee Amounts – Daycare..... 25

Chart 18: Fee Amounts – Driver’s Ed 26

Chart 19: Fee Amounts – Instruments 27

Chart 20: Fee Amounts – Library and Technology 28

Chart 21: Fee Amounts – Hourly Facility Use..... 29

Chart 22: Fee Amounts – Per Event Facility Use 30

Chart 23: Fee Amounts – Shops and Labs..... 31

Chart 24: Fee Amounts – Publications and Textbooks 32

Chart 25: Fee Amounts – Uniforms..... 33

Chart 26: Fee Amounts – All Day Kindergarten 34

Chart 27: Fee Amounts – Other 35

Participation Fees

As Chart 1 shows, less than 15% of districts reporting indicated they charged fees for student participation in extracurricular activities in 2001-02, compared to over 30% in 2015-16.

Further, as shown in Chart 2, the average fees charged in 2001-02 were approximately \$22 for middle school and \$25 for high school, compared to \$28 and \$34 dollars respectively in 2015-16.

Though response rates have varied over time, there is a fairly consistent trend in Chart 3 indicating an even split between districts charging each student for each activity (9% in 2007-08 and 14% in 2015-16) versus districts charging one fee per student regardless of how many activities they participate in (10% in 2007-08 and 13% in 2007-08). The percent of districts that report charging each family one fee regardless of the number of students and the number of activities they participate in has consistently been less than 2%.

Chart 4 shows that the percentage of districts that have policies for refunding all or part of the participation fees has increased over time more than the percentage of districts reporting no refund policies. In 2001-02, about 3% reported no refund policies and 7% reported refund policies. In 2015-16, 9% reported no refund policies, and 19% reported refund policies.

Chart 5 has information on several policies related to participation fees. The trends identified are as follows:

- The percent of districts reporting policies for reducing or waiving participation fees has increased from approximately 5% in 2001-02 to 15% in 2015-16.
- About 5% of districts reported that the participation fees are traditionally thought of as “locker fees” or “towel fees” in 2001-02. This percentage increased to almost 8% in 2006-07, then decreased back to around 5% in 2015-16.
- The percent of districts indicating that participation fees also cover admissions to events has increased from about 4% in 2001-02 to about 5% in 2015-16.
- The percent of districts reporting policies for discounts on participation fees was less than 1% in 2001-02, then increased to about 6% in 2012-13, and has now decreased to between 4% and 5% as of 2015-16.

Chart 1: Districts Charging Participation Fees

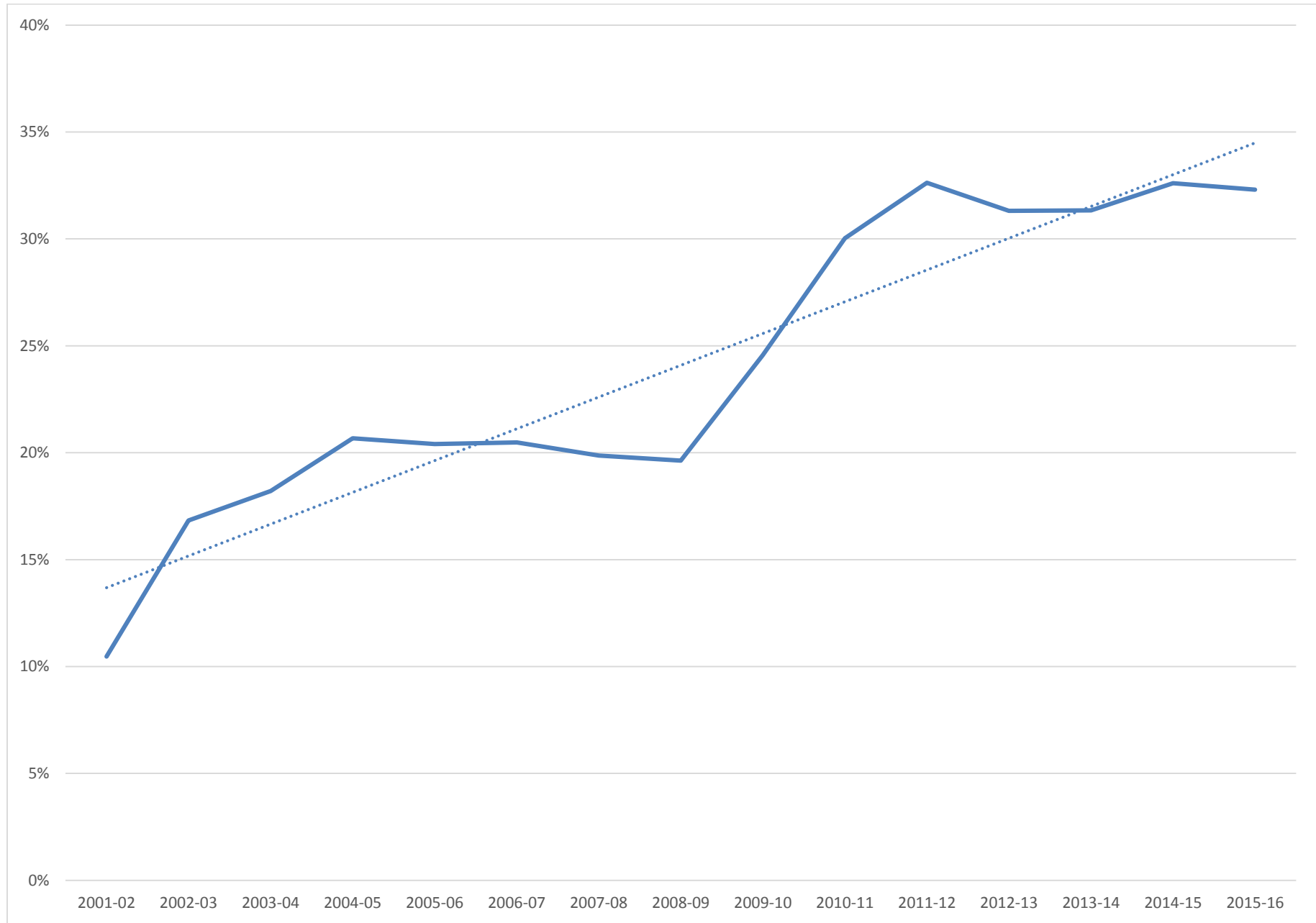


Chart 2: Participation Fees

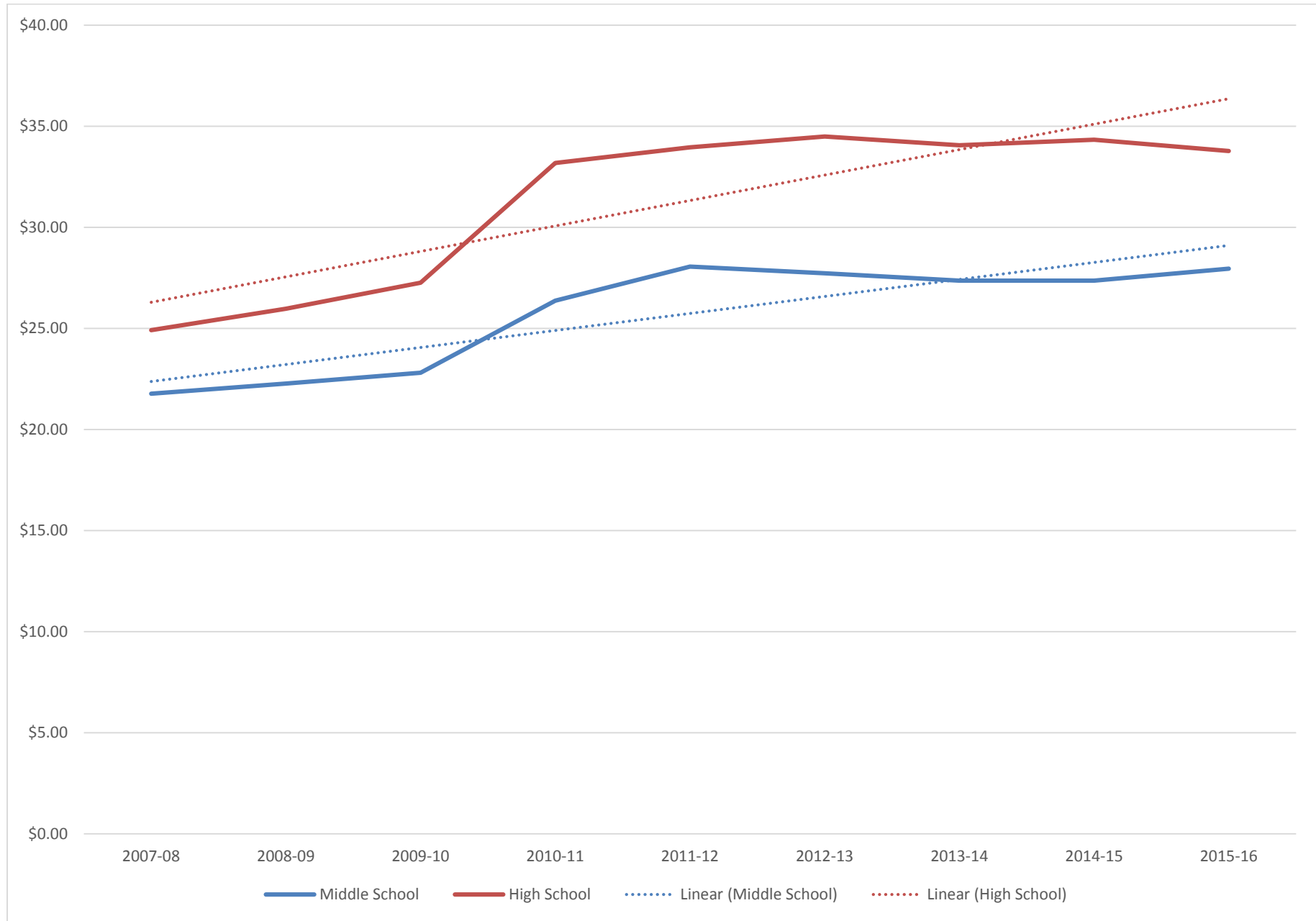


Chart 3: Type of Participation Fees

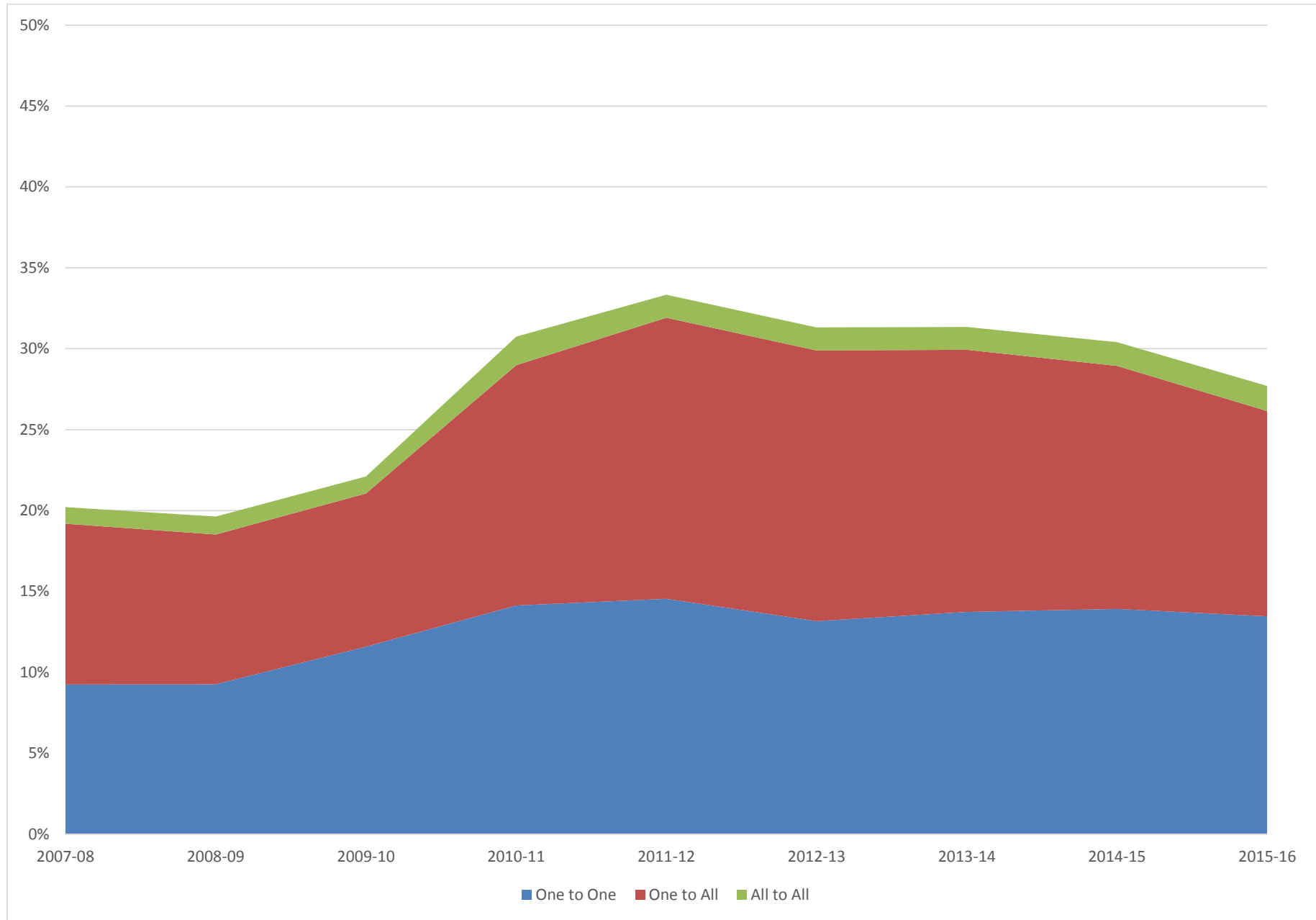


Chart 4: Participation Fees Refunds

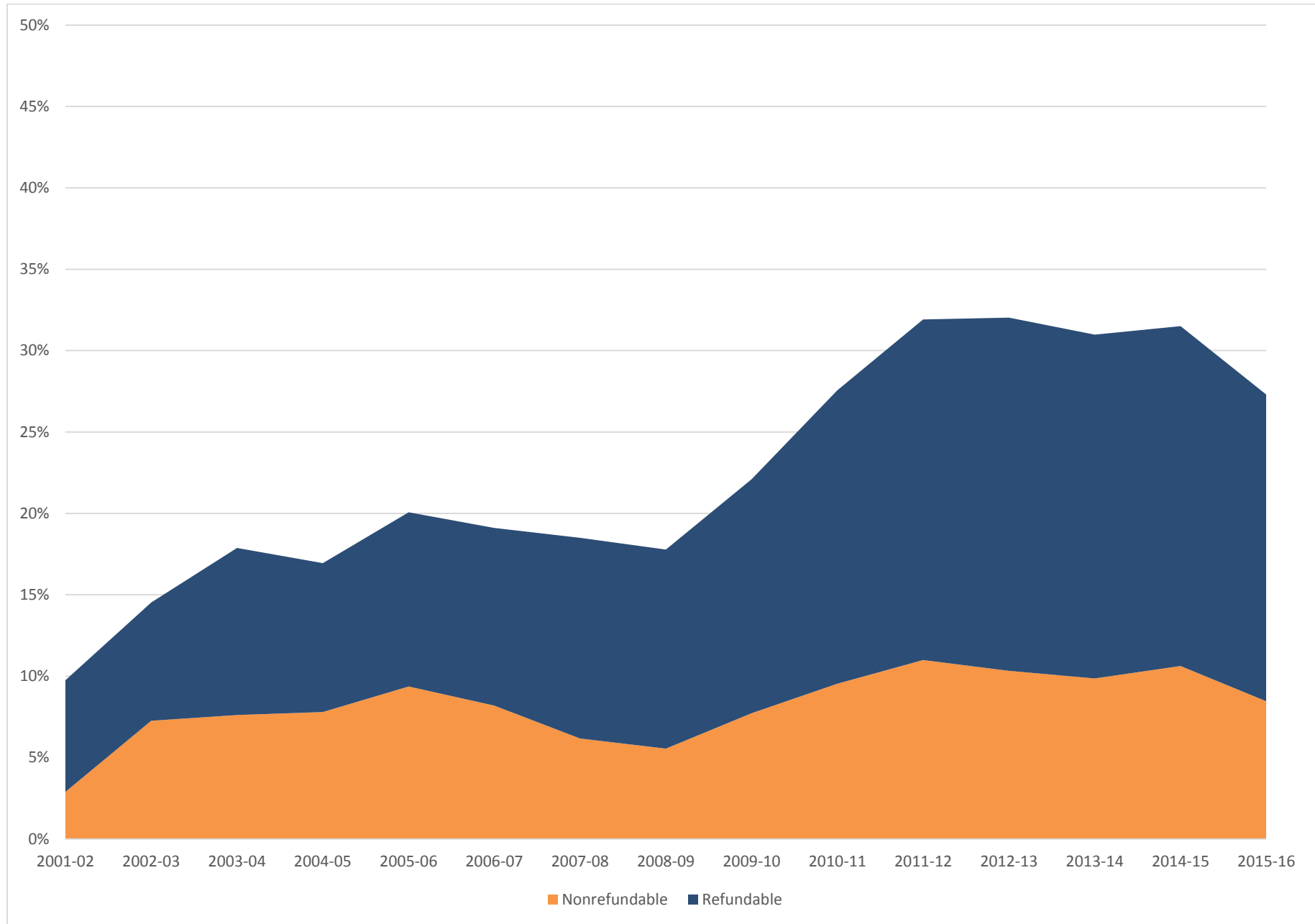
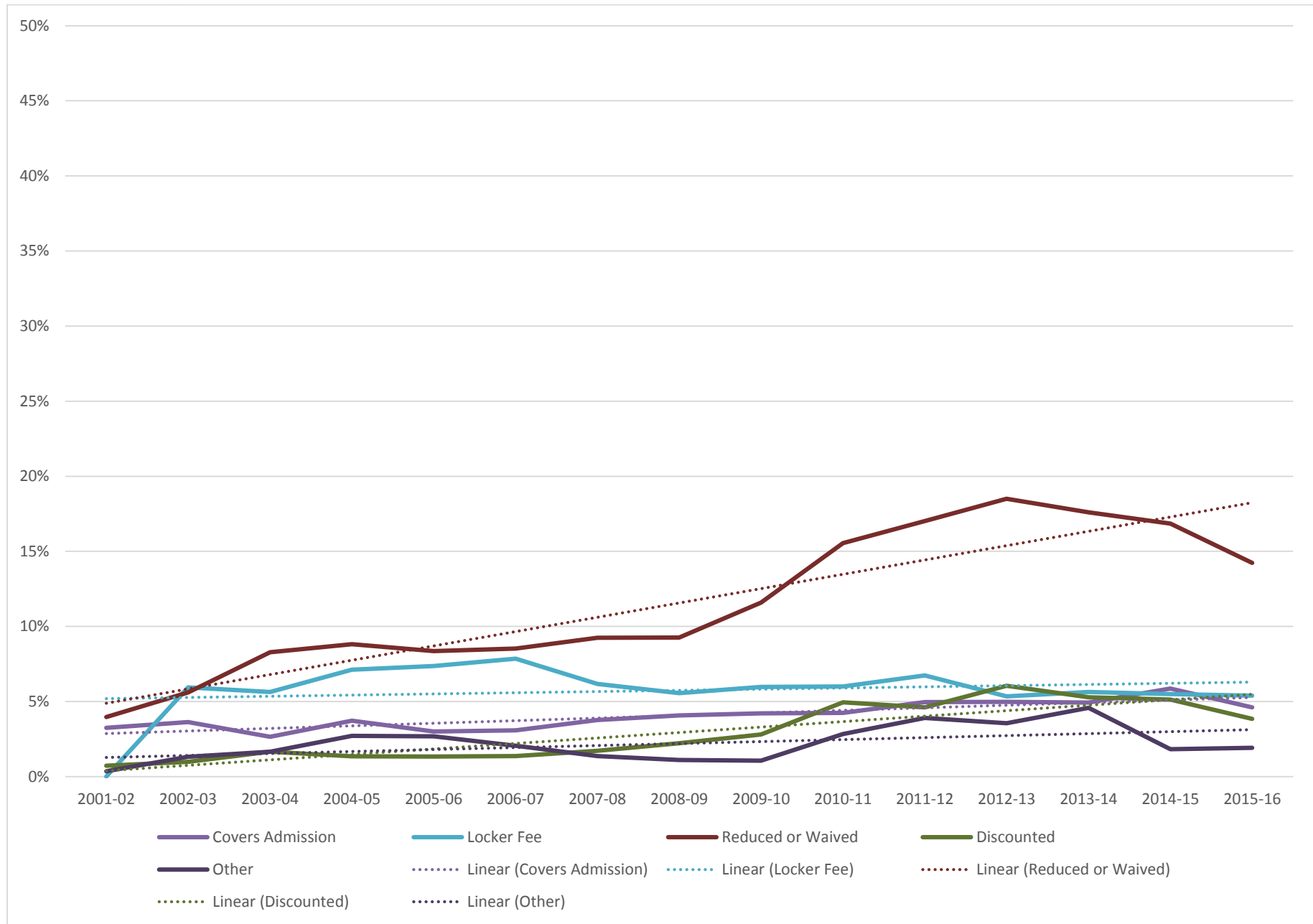


Chart 5: Participation Fees Details



Admission Fees

As Chart 6 shows, about 73% of districts reported charging admission to athletic events in 2002-03, compared to 83% in 2015-16.

The average amount charged per event at the middle and high school levels has remained fairly consistent over time, with high school fees around three dollars per event and middle school fees around two dollars per event, as shown in Chart 7. The fees for annual admissions, on the other hand, have increased notably. High school annual admission passes have gone from approximately \$19 in 2002-03 to \$30 in 2015-16. Middle school annual admission passes have gone from \$18 in 2007-08 to \$26 in 2015-16.

Chart 6: Districts Charging Admission Fees

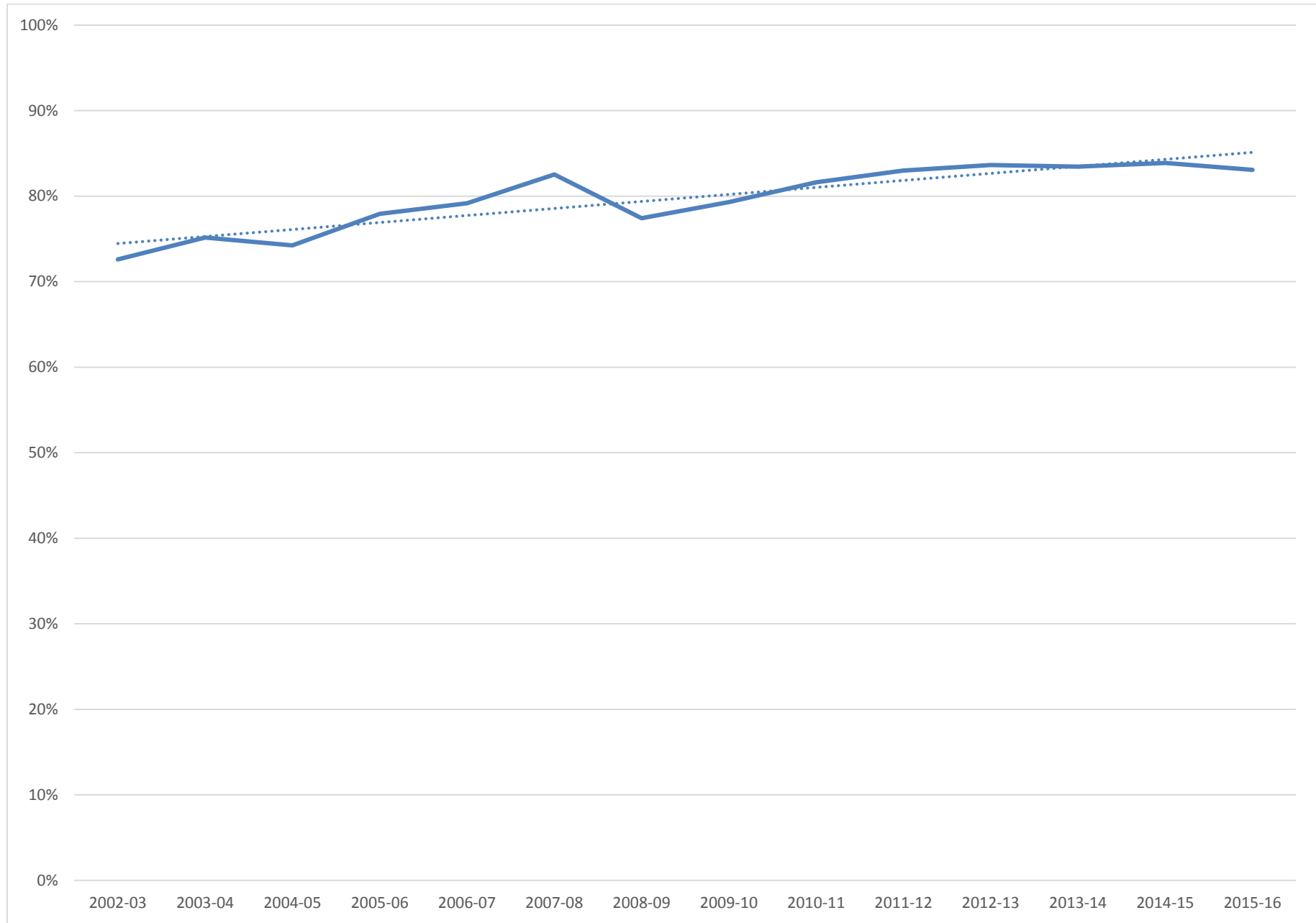
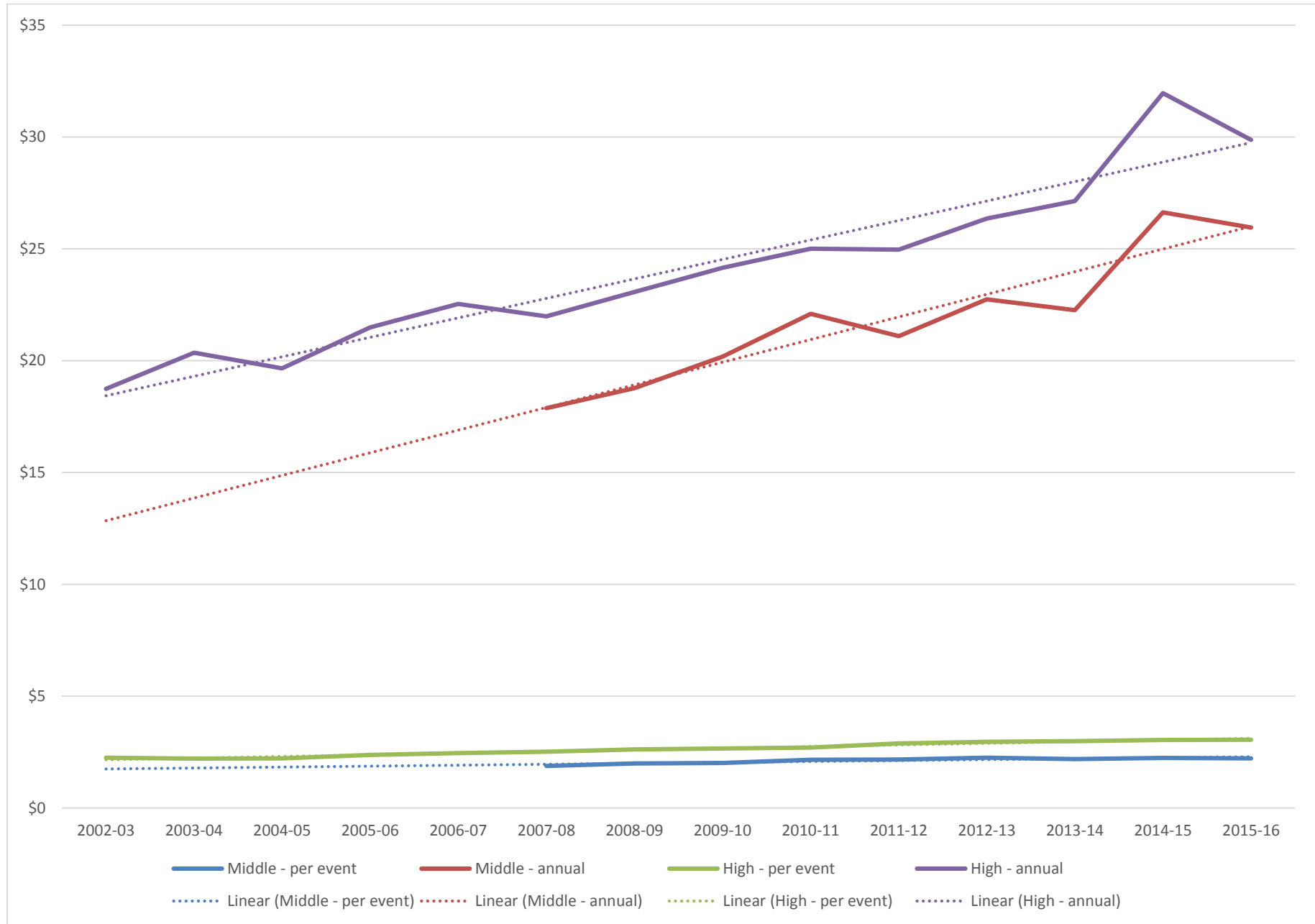


Chart 7: Admission Fees



Income

In terms of the percent of districts reporting income from specific income sources, about 83% of districts reported income from gate receipts in 2002-03 compared to 94% in 2015-16. Contrarily, 73% of districts reported income from general fund transfers in 2002-03, compared to only 61% in 2015-16. The percent reporting income from admission passes has gone from 4% to 8%, other funds from 20% to 34%, and from participant fees from 11% to 26%.

Chart 9 shows that the percent of districts' activities budget made up of specific income sources. Other funds remained fairly consistent around 9%, admission passes around 6% (showing an upward trend since 2014-15), and participant fees around 3%. Gate receipts and general fund transfers show opposing trends; with the percent made up of gate receipts showing an upward trend from 40% in 2003-04 to 46% in 2015-16, and general fund transfers showing a downward trend from 43% in 2003-04 to 34% in 2015-16.

The percent of districts reporting income from vending machines has decreased from as high as 28% (in 2005-06) to 18% in 2015-16, as can be seen in Chart 10. The percent of districts reporting income from concessions has increased from 12% in 2002-03 to 21% in 2015-16. Income from other sources has been reported by less than 5% of districts consistently (with the exception of 2003-04).

Chart 11 provides the average per-pupil income amounts for each type of purchase. Though this data shows more variation than some due to lower response rates, in general income from bookstores has decreased from about \$5 per pupil to closer to \$2 per pupil, vending machine income from about \$9 per pupil to \$4 per pupil, while income from concessions and other sources have increased from approximately \$17 per pupil to around \$20 per pupil.

Chart 8: Districts Reporting Activity Income

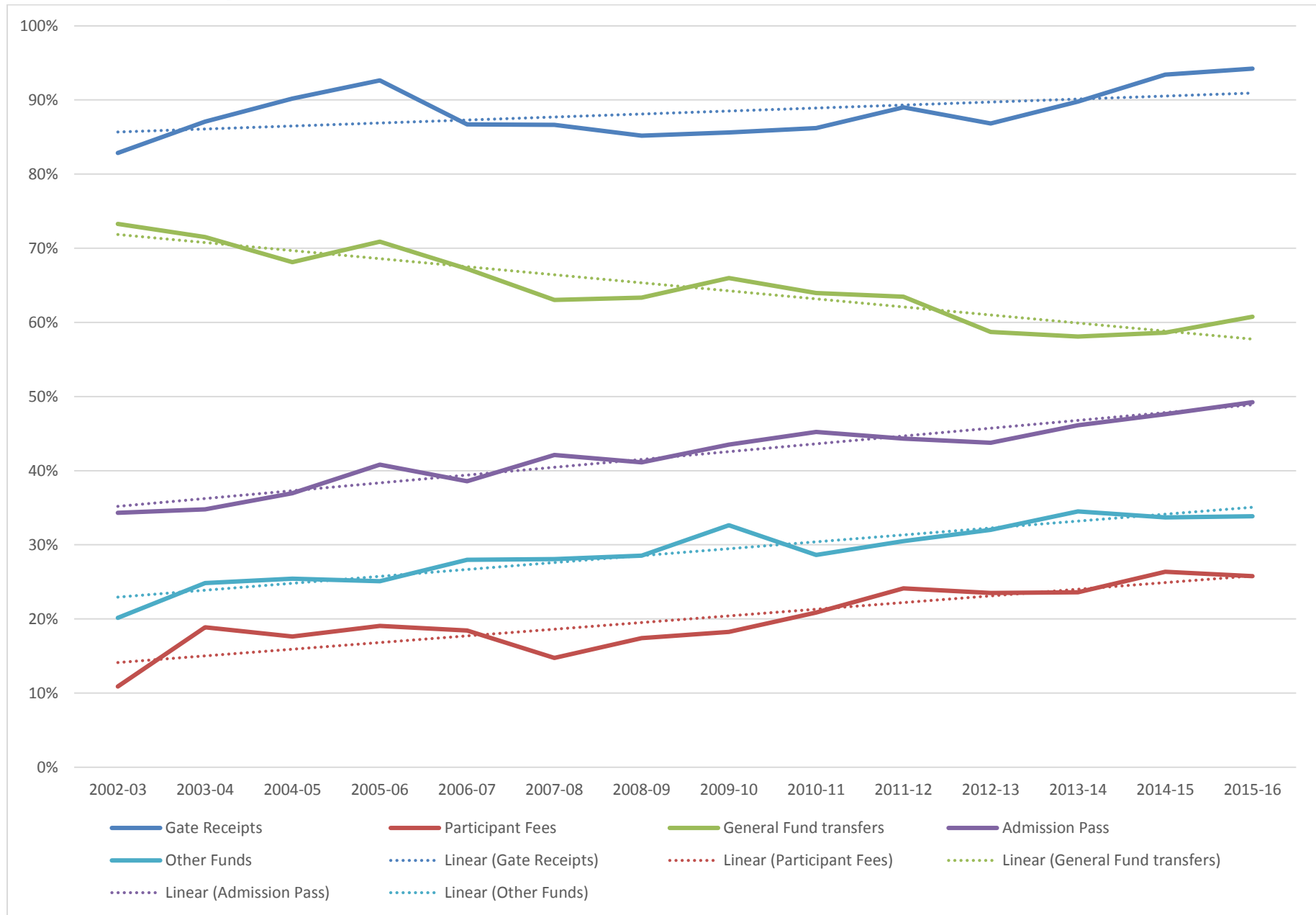


Chart 9: Activity Budgets

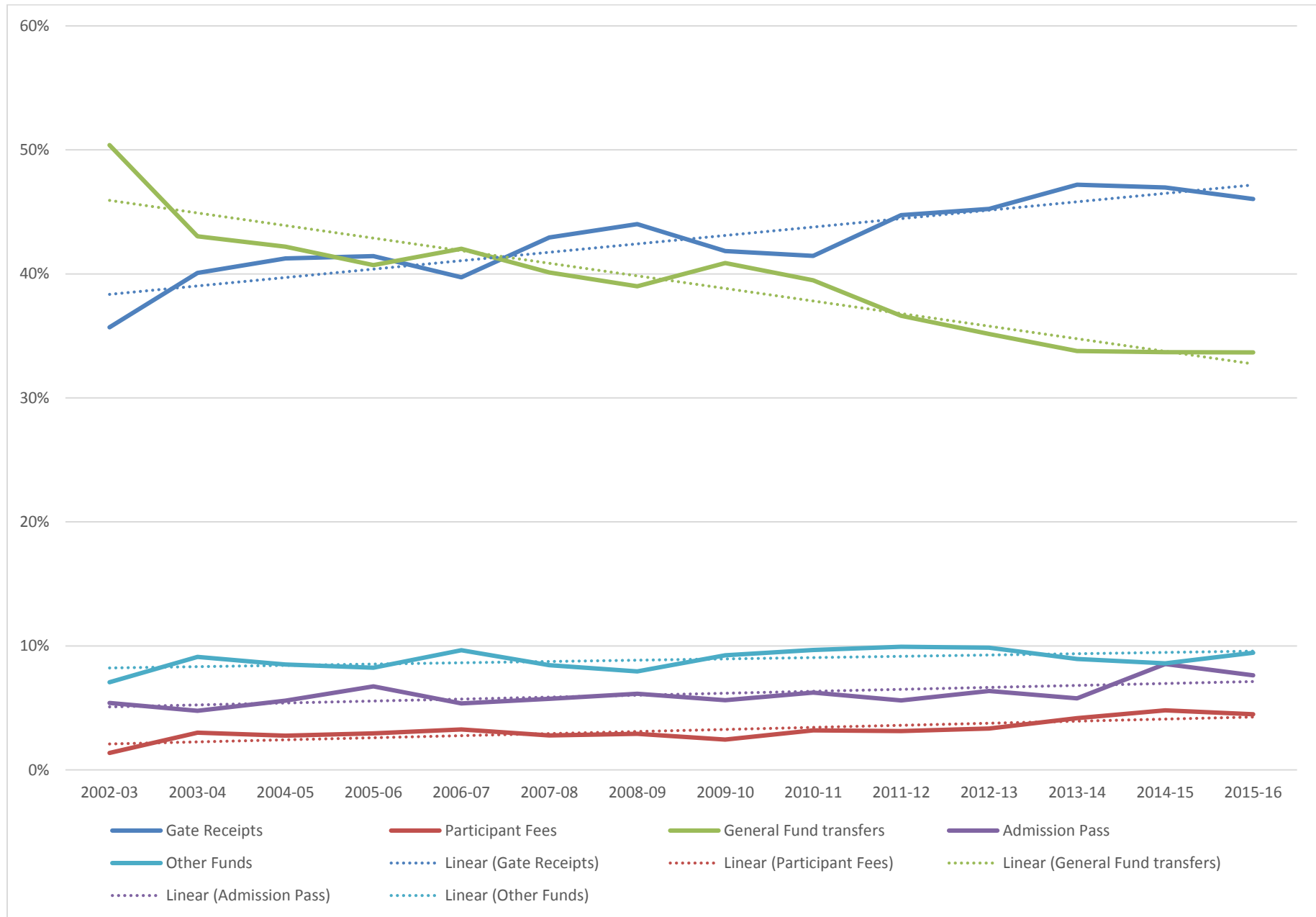


Chart 10: Income from Purchases - Counts

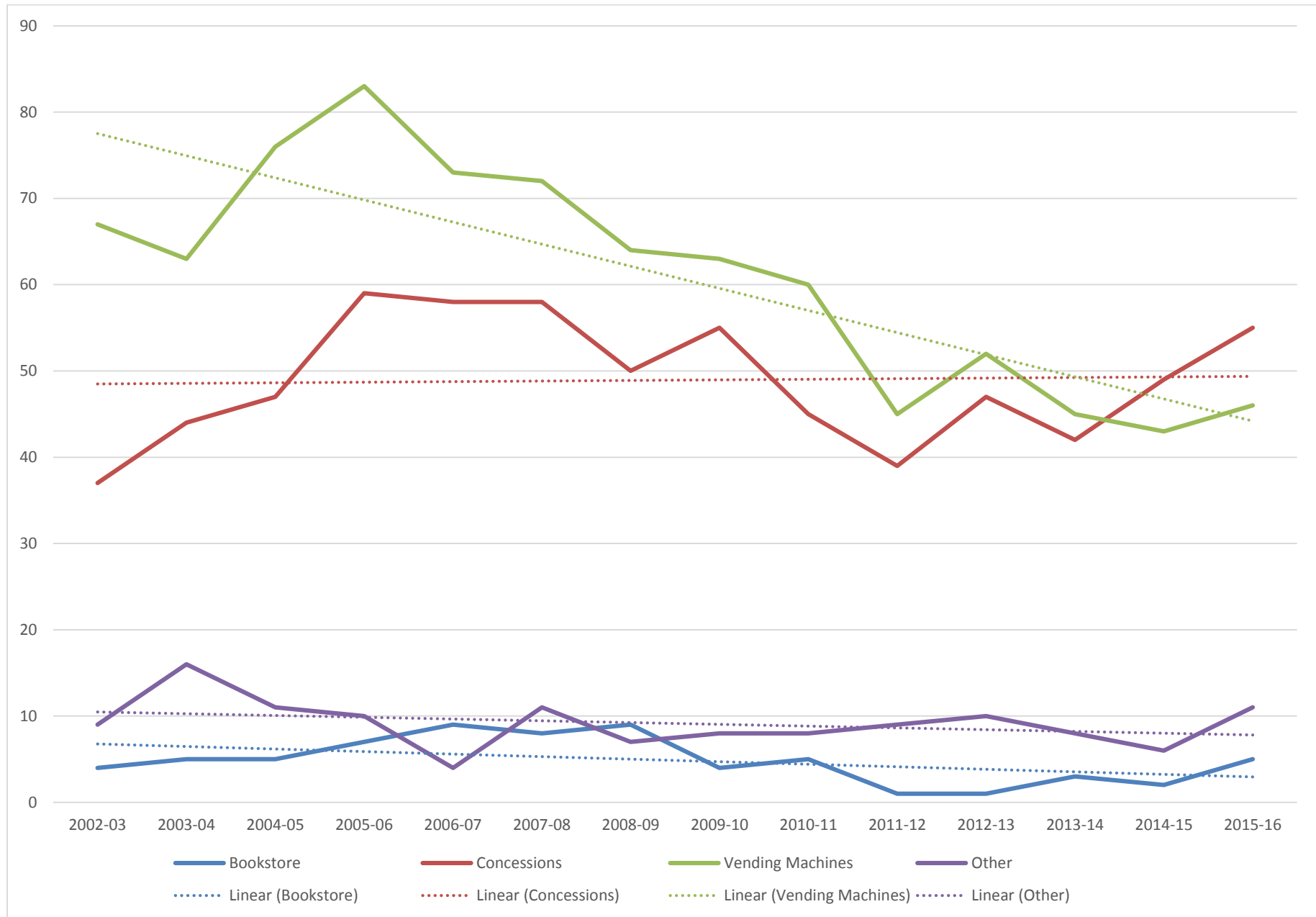
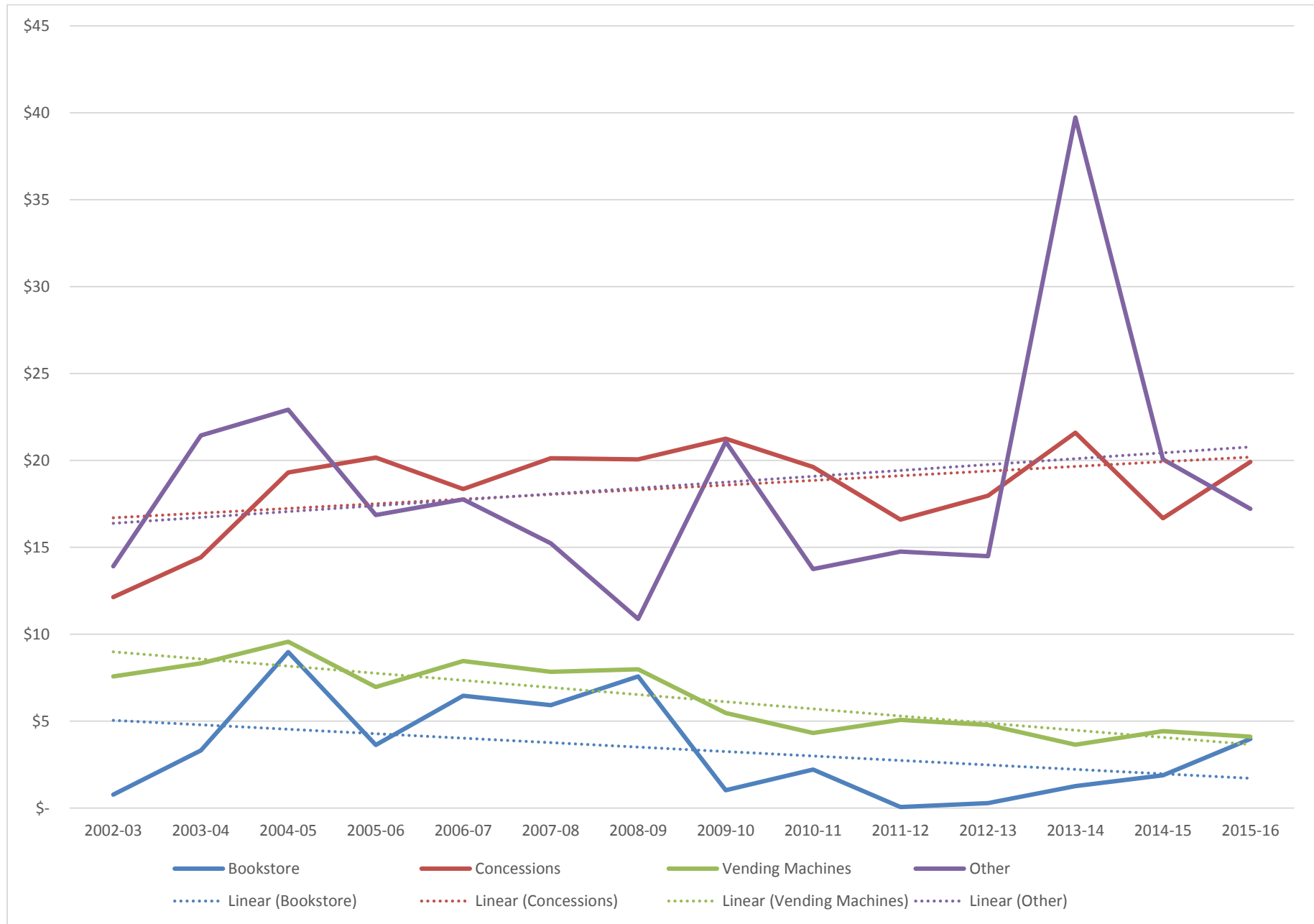


Chart 11: Income from Purchases – Per Pupil Amounts



Activity Fees

As Chart 12 shows, there has been a decrease in the percent of districts reporting that they provide camps for various activities with no charge to students, most notably for spirit squad camps and team athletics camps, which were the only two categories reported as free by more than 10% of the districts in 2001-02, but have come down to less than 10% of districts reporting by 2015-16.

Chart 13 indicates that the percent of districts providing laundry services have remained fairly consistent, with just under 50% of districts providing free laundry for team athletics, 30% for music groups, 20% to 25% for individual athletics (with a slight upward trend), 10% to 12% for spirit squads, and around 7% to 8% for other activities.

There has been a decrease in the percent of districts providing meals for these extracurricular activities at no cost, as shown in Chart 14. Around 40% of district reported providing free meals for team athletics in 2001-02, compared to just under 20% in 2015-16. Music groups, spirit squads, and individual athletics decreased from about 35% to about 15%, and other activities decreased from about 25% to around 10%.

The percent of districts providing free transportation for team athletics, music groups, and spirit squads has remained between 90% and 100% from 2001-02 through 2015-16, as shown in Chart 15. The percent providing transportation for individual athletics and other activities has increased from around 70% to closer to 80%.

Chart 16 indicates that the percent of districts providing uniforms for team athletics is declining from around 95% in 2001-02 to just under 80% in 2015-16. Similarly, the percent of districts providing uniforms at no cost for individual athletics, music groups, and spirit squads has decreased from around 60% to around 50%. The percent of districts providing uniforms for other activities has remained around 15%.

There is a great deal of variation in the actual fees charged for specific activities. This variation is partially because of smaller number of districts reporting actual dollar amounts.

Chart 17 show the average amount charged for daycare. Though the hourly rate has remained at around \$5 per hour, the monthly rate has increased from \$30 to closer to \$70, and the "other" rate has gone from as low as \$12 (in 2006-07) to over \$100 in 2015-16.

Driver's education charges have increased, as shown in Chart 18. The average amount for out-of-district students went from \$130 in 2005-06 to \$215 in 2015-16 and from \$90 to \$150 for in-district students. Summer driver's ed programs went from \$110 in 2008-09 to \$150 in 2015-16.

As can be seen in Chart 19, the charges for musical instruments has increased from between \$25 and \$33 in 2002-03 to between \$33 and \$43 in 2015-16.

According to Chart 20, library and technology fees are also increasing; most notably technology shops and labs, which went from less than \$10 in 2002-03 to around \$30 in 2015-16.

Chart 21 show that per-hour facilities rentals are increasing; from between \$20 and \$25 for the cafeteria, commons, or gym in 2007-08 to between \$25 and \$30 in 2015-16 and from \$27 an hour for the auditorium in 2007-08 to \$38 in 2015-16.

The per event fees for facilities rentals also show an increase, but the trends for different facilities vary in the amount of increase as can be seen in Chart 22. The auditorium per event rental showed the largest increase from an average around \$30 in 2003-04 to \$120 in 2015-16. Gym rental went from \$85 in 2004-05 to \$118 in 2015-16. Commons per event rental went from \$23 in 2004-05 to \$67 in 2015-16, and cafeteria rental went from \$43 in 2007-08 to \$74 in 2015-16.

Fees for shops and labs have increased. Science labs, the bottom line on Chart 23, went from under \$9 in 2002-03 to \$14 in 2015-16. Other labs went from around \$18 to over \$20 in 2015-16. All other labs (art, home economics, metal, and wood) fell somewhere in between these two, but show the same trend in increases.

Chart 24 shows that though middle and high school planner fees have stayed relatively consistent, fees for all other publications and textbooks have increased. Newspaper fees went from \$8 in 2005-06 to \$15 in 2015-16, middle school yearbook from \$16 to \$23, and high school from \$32 to \$41. Fees for textbooks went from between \$20 and \$40 in 2002-03 to between \$40 and \$55 in 2015-16.

Fees for uniforms have shown slight increases from between \$13 and \$29 in 2002-03 to between \$19 and \$33 in 2015-16. This does not include spirit squad uniform fees, which went from \$94 in 2002-03 to over \$160 in 2015-16 for high school and from \$88 in 2002-03 down to just over \$60 in 2011-12 then up to \$104 in 2015-16 for middle school, as shown in Chart 25.

Chart 26 shows that the average fee for all-day kindergarten has gone from \$134 in 2009-10 to \$789 in 2015-16.

The final Chart (27) shows fees for other miscellaneous items, all of which exhibit upward trends. Fees for bussing students not paid for by the state went from \$127 in 2002-03 to \$186 in 2015-16. All other fees stayed below \$50 per student.

Chart 12: Provided Free - Camps

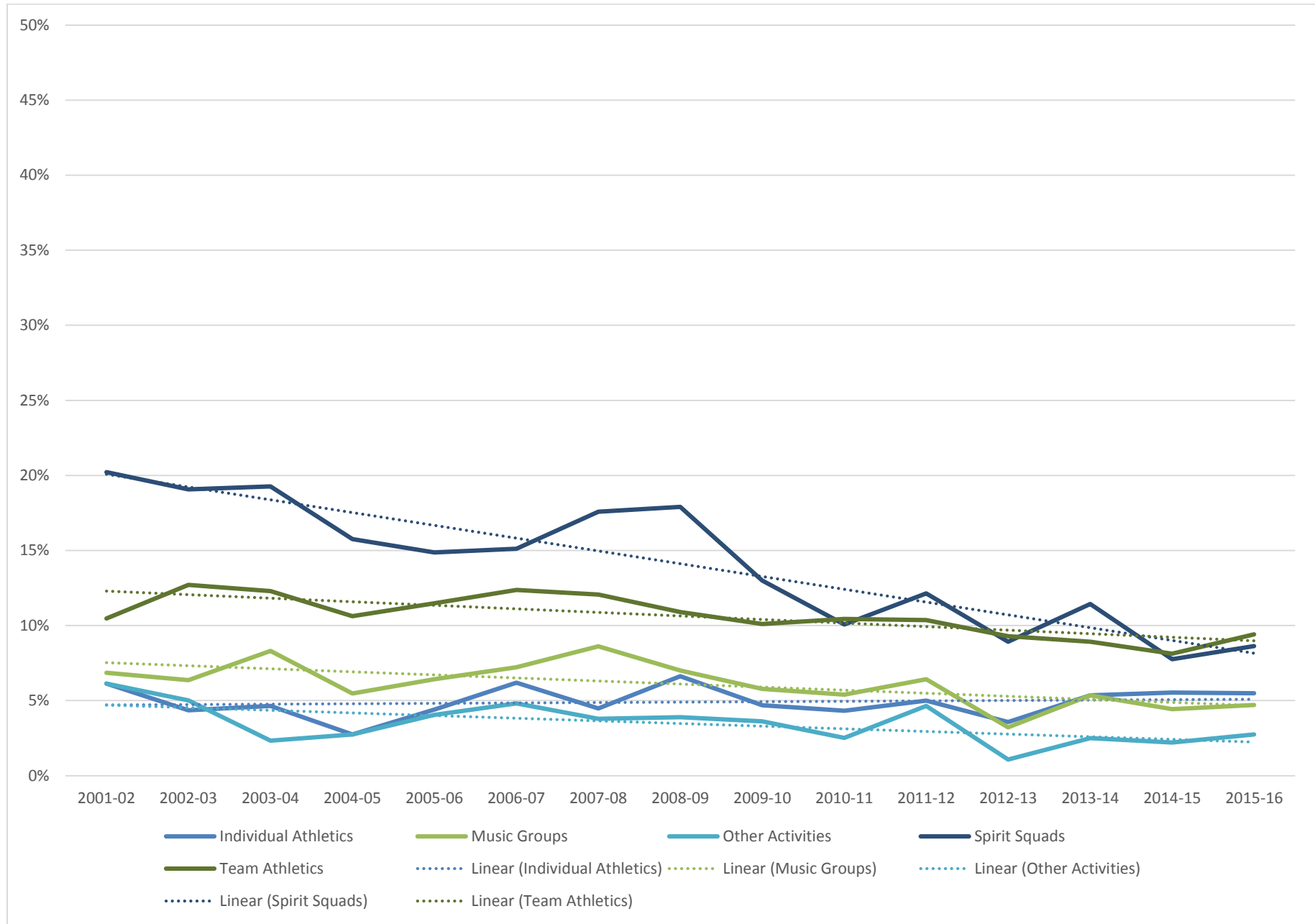


Chart 13: Provided Free – Laundry

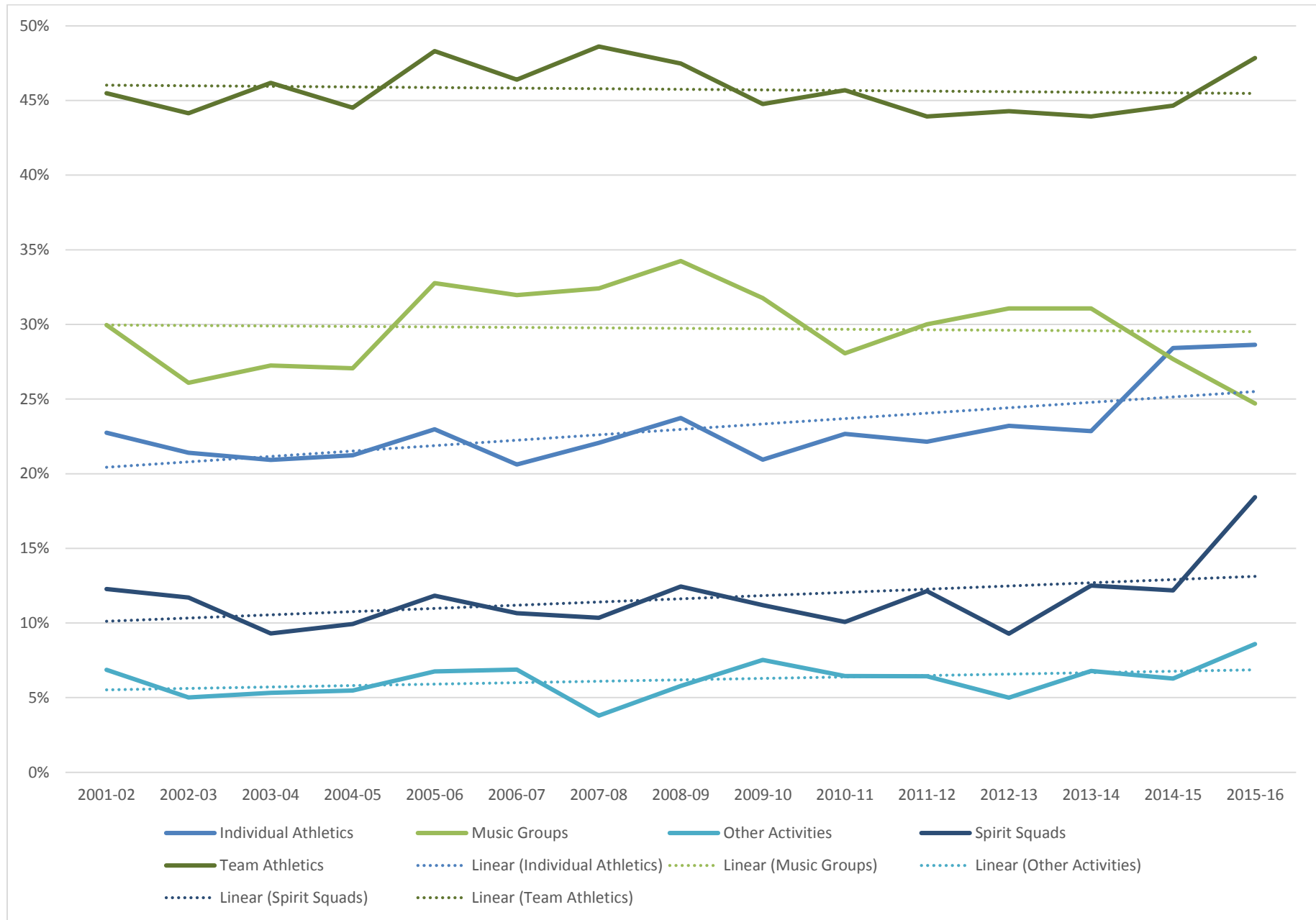


Chart 14: Provided Free – Meals

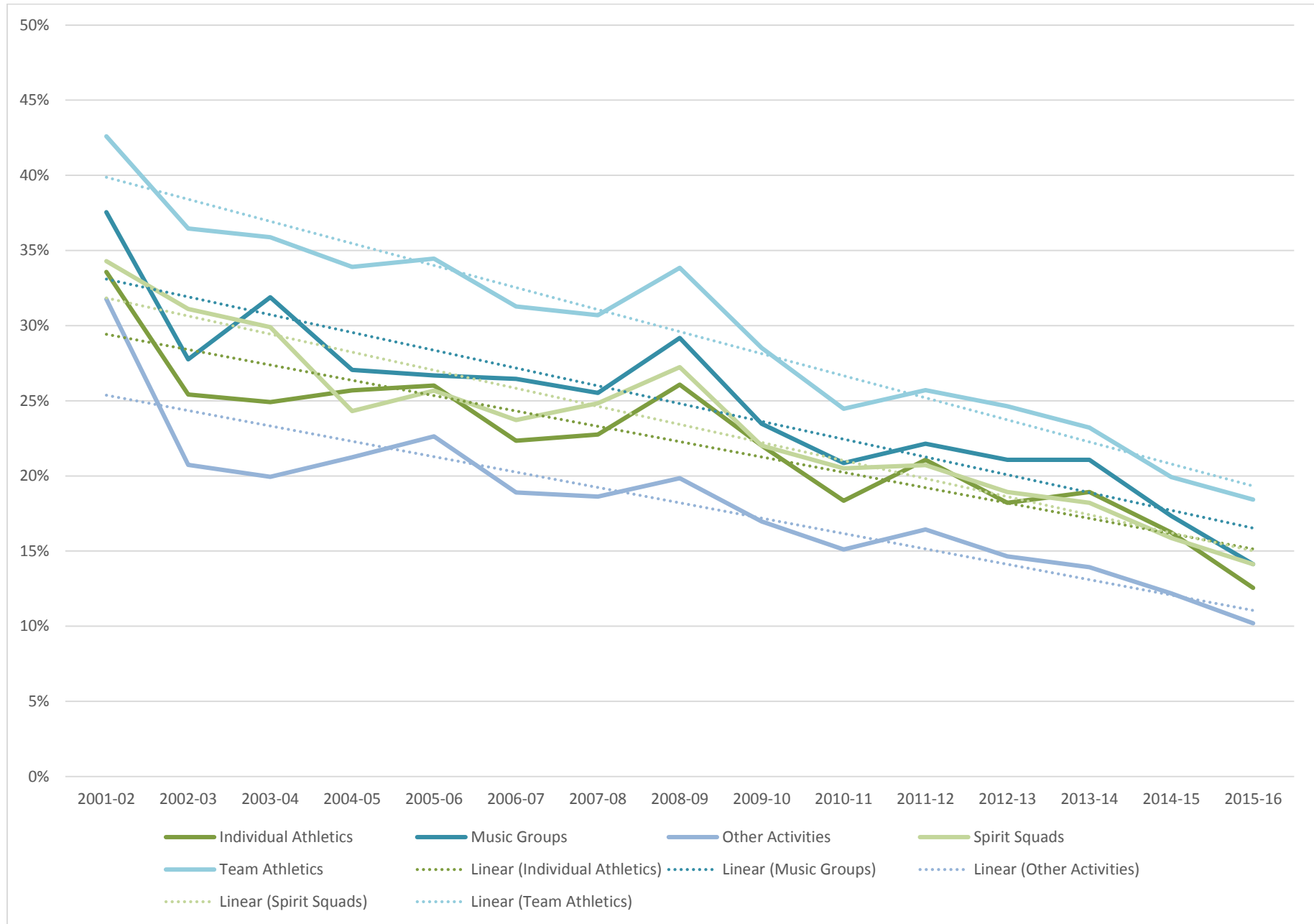


Chart 15: Provided Free – Transportation

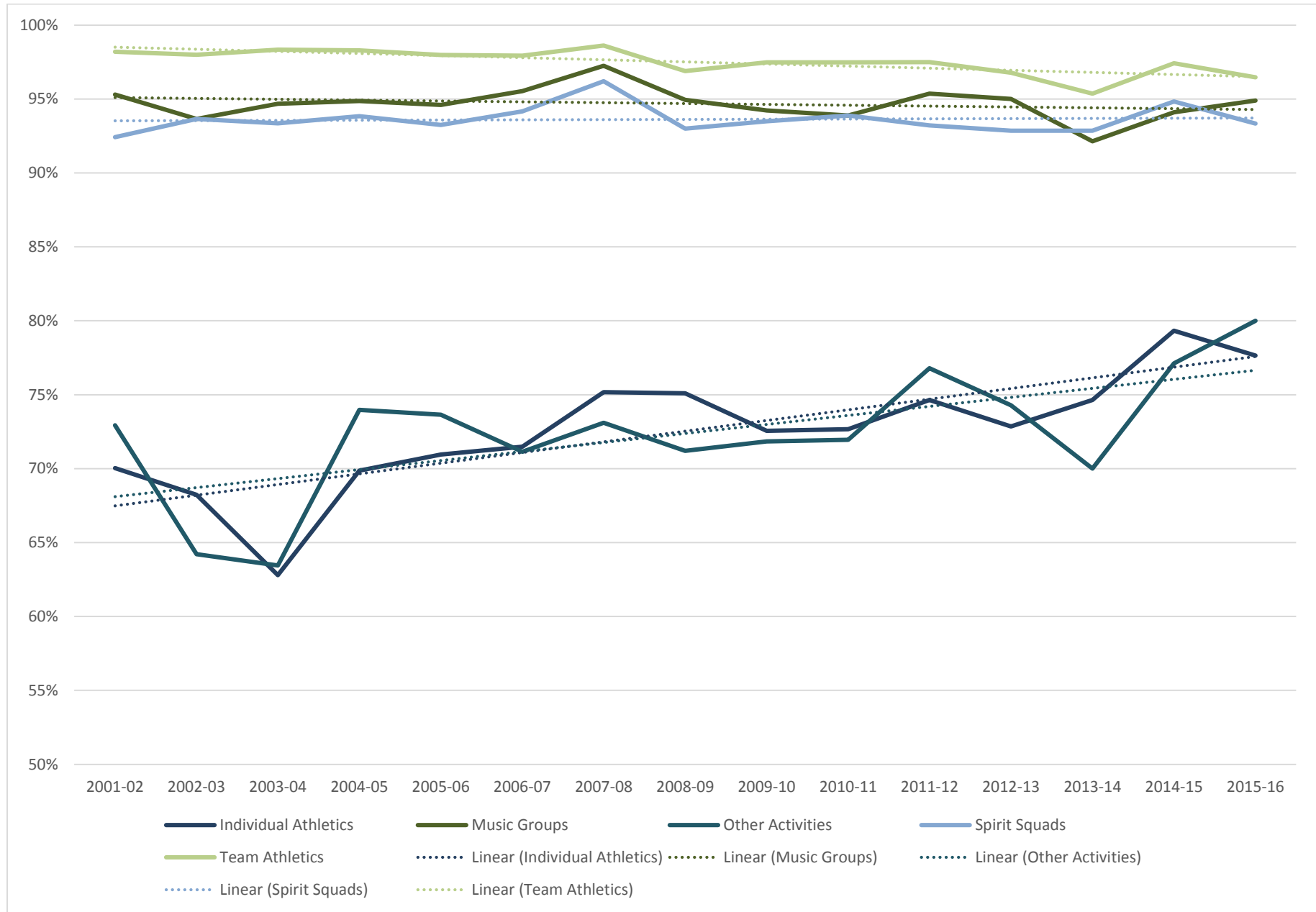


Chart 16: Provided Free – Uniforms

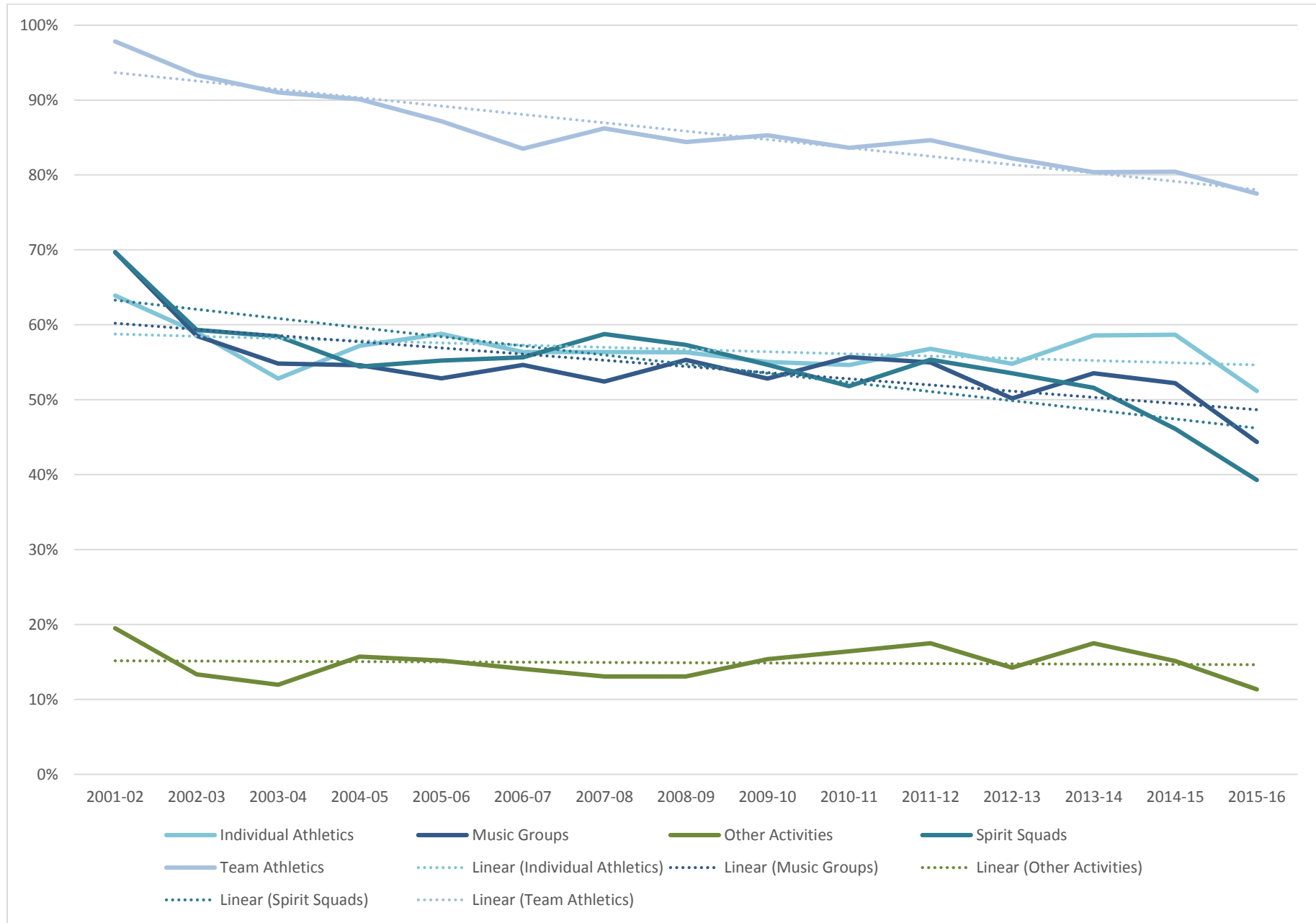


Chart 17: Fee Amounts – Daycare



Chart 18: Fee Amounts – Driver's Ed

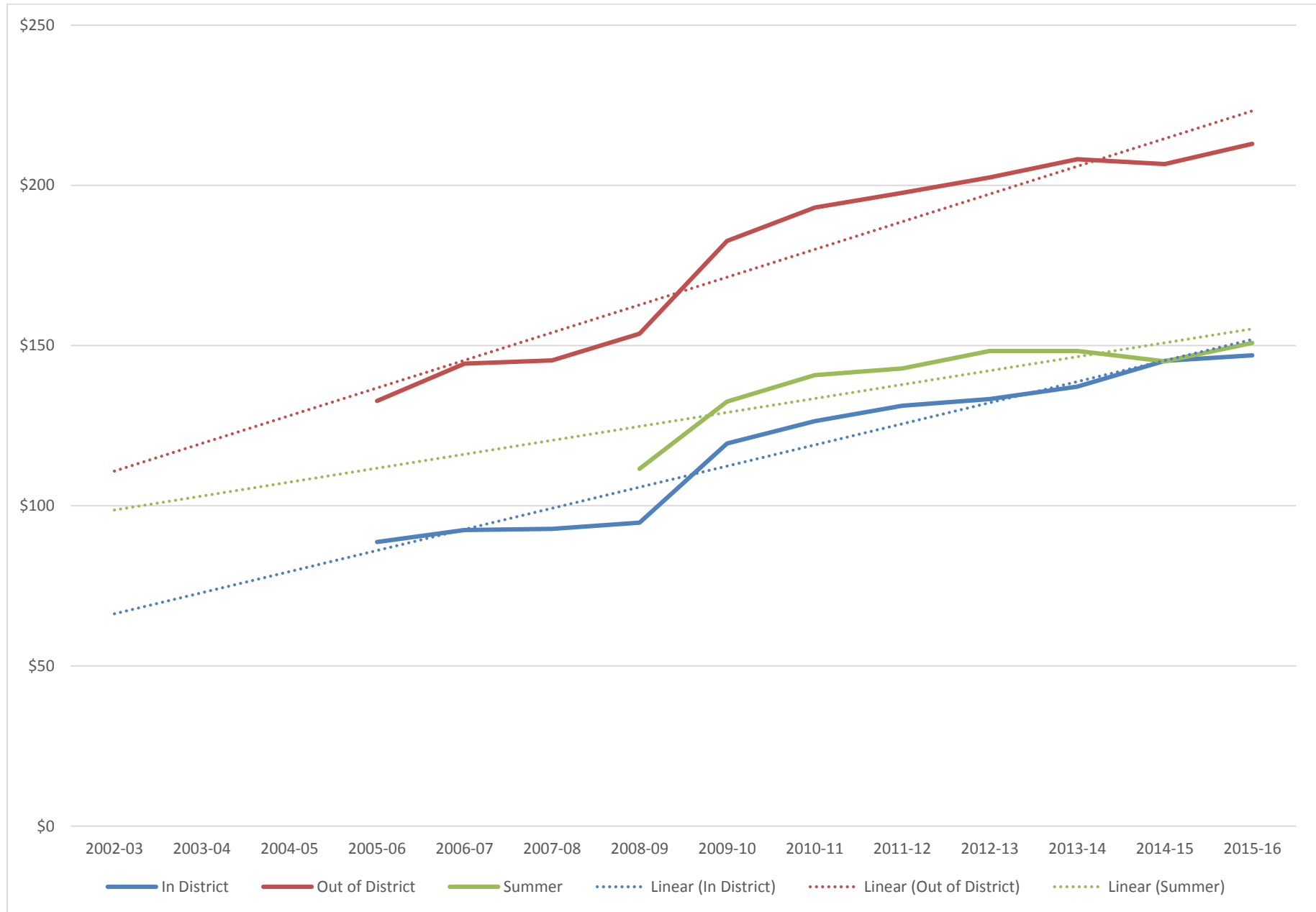


Chart 19: Fee Amounts – Instruments

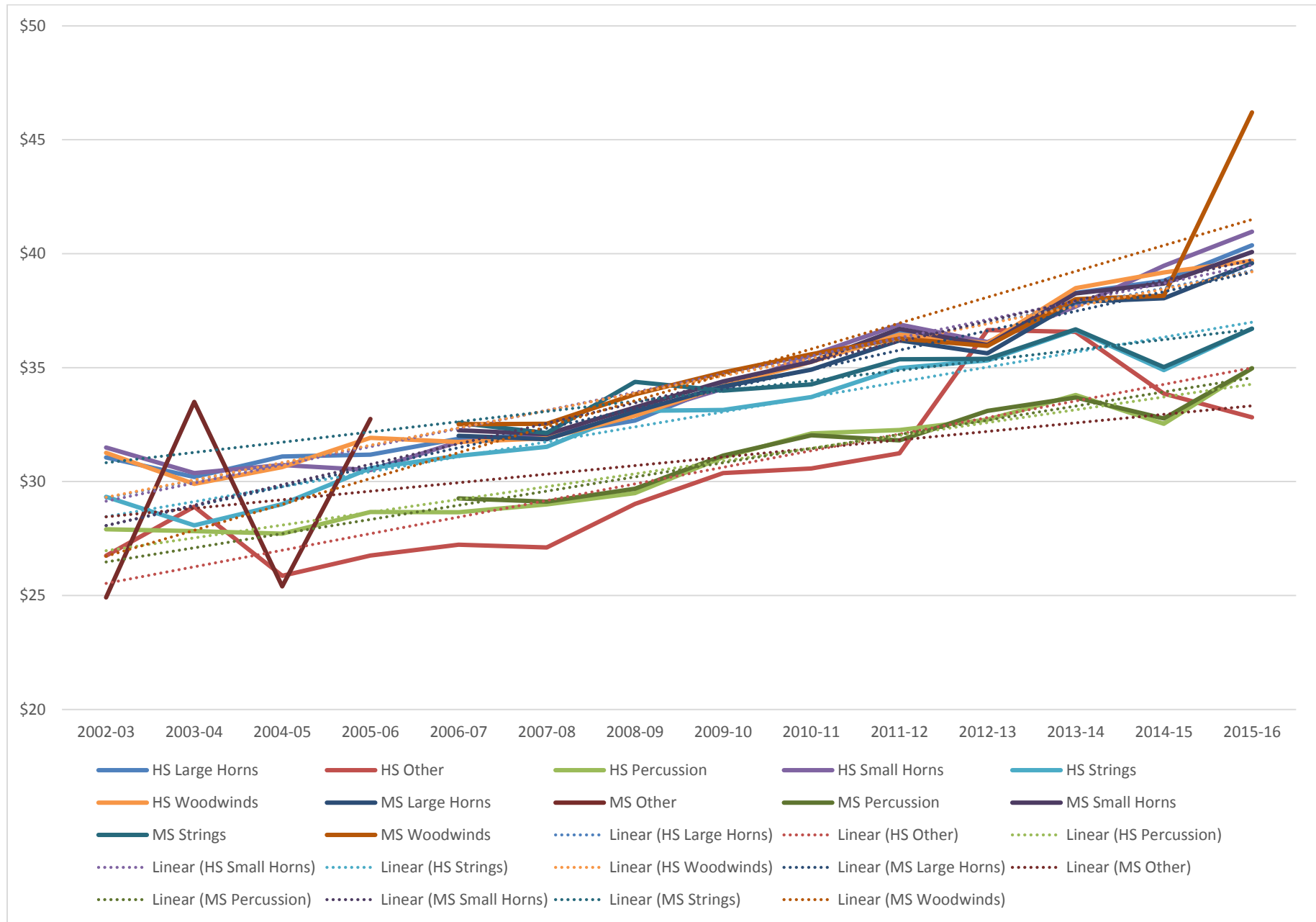


Chart 20: Fee Amounts – Library and Technology

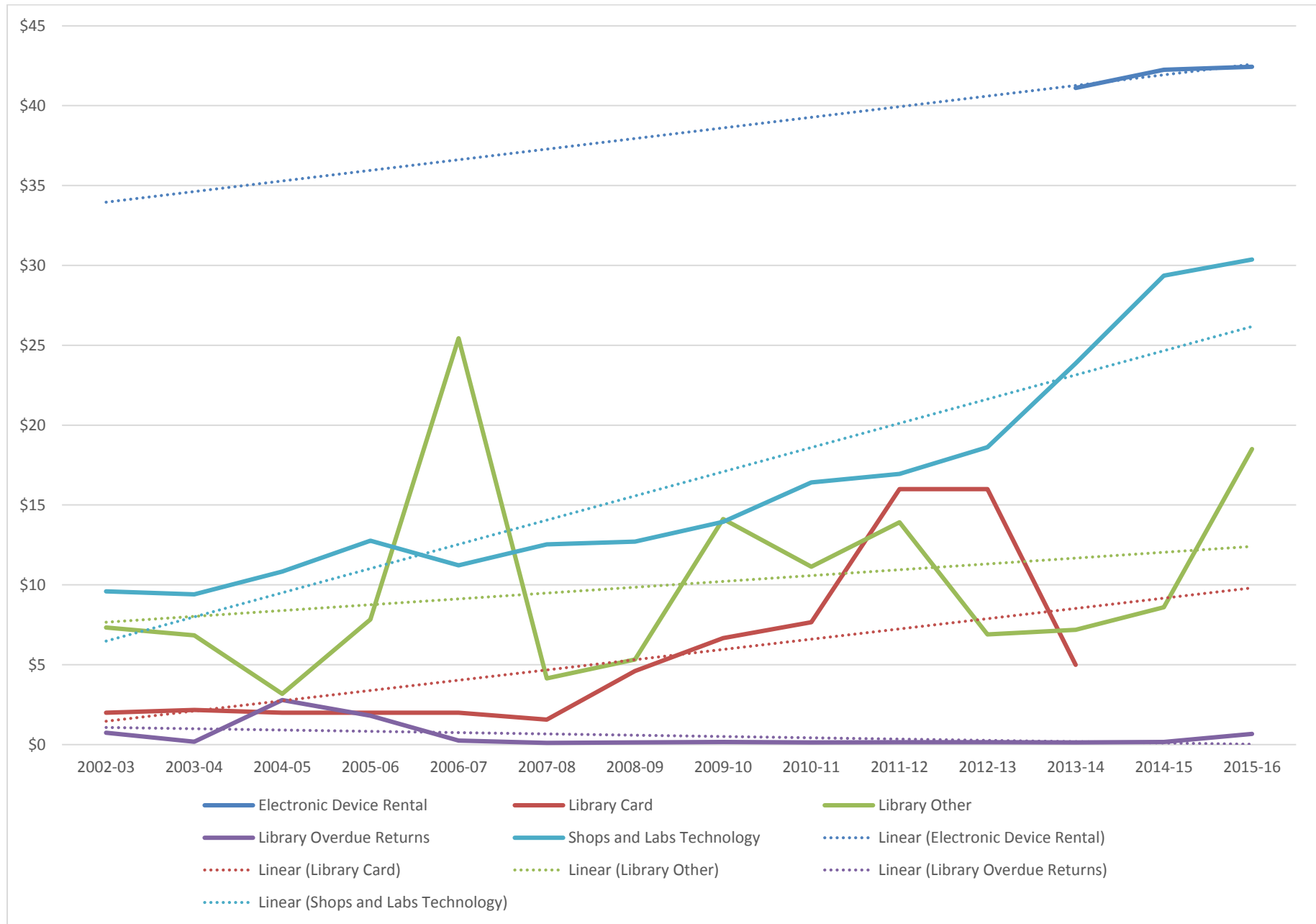


Chart 21: Fee Amounts – Hourly Facility Use

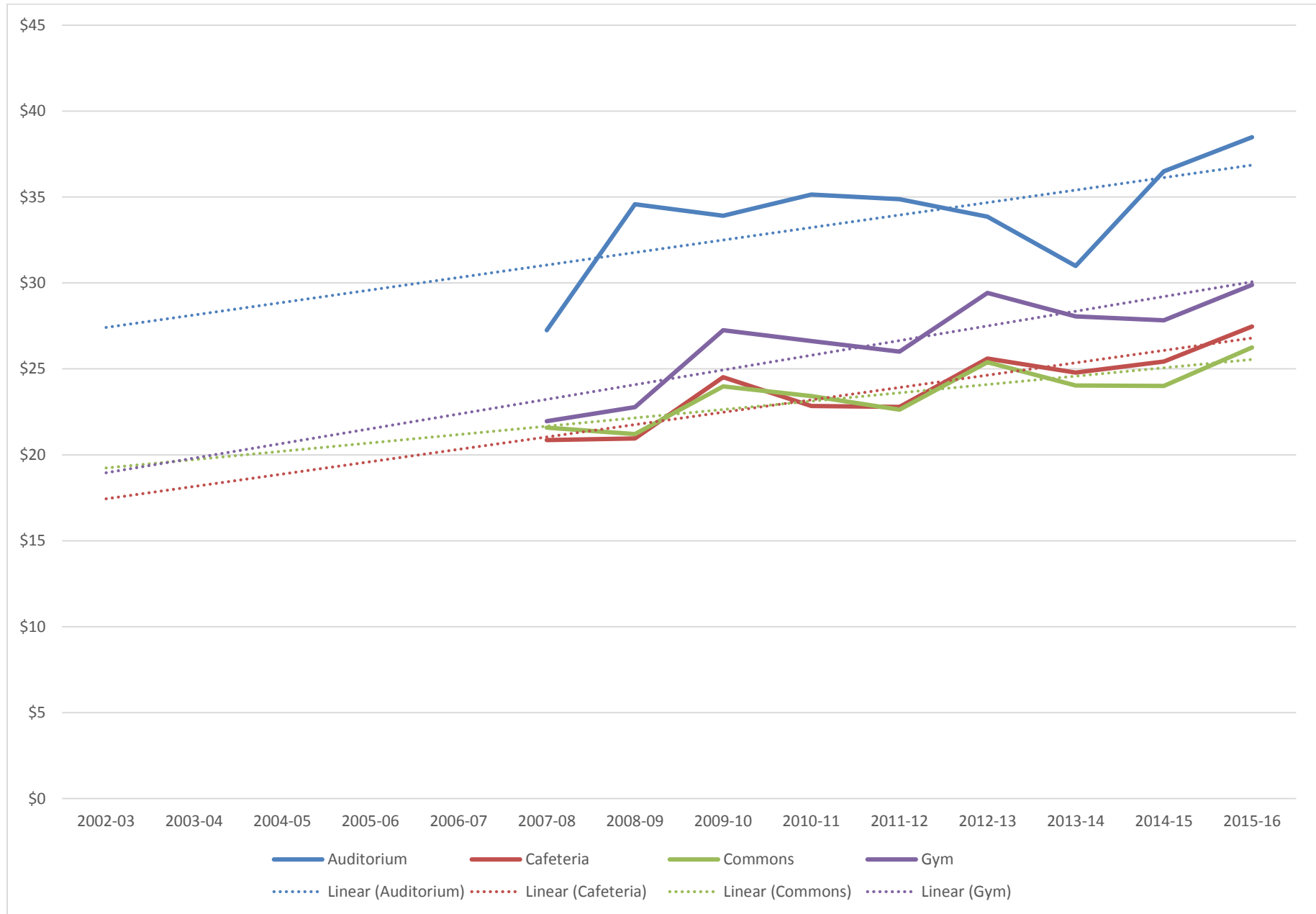


Chart 22: Fee Amounts – Per Event Facility Use

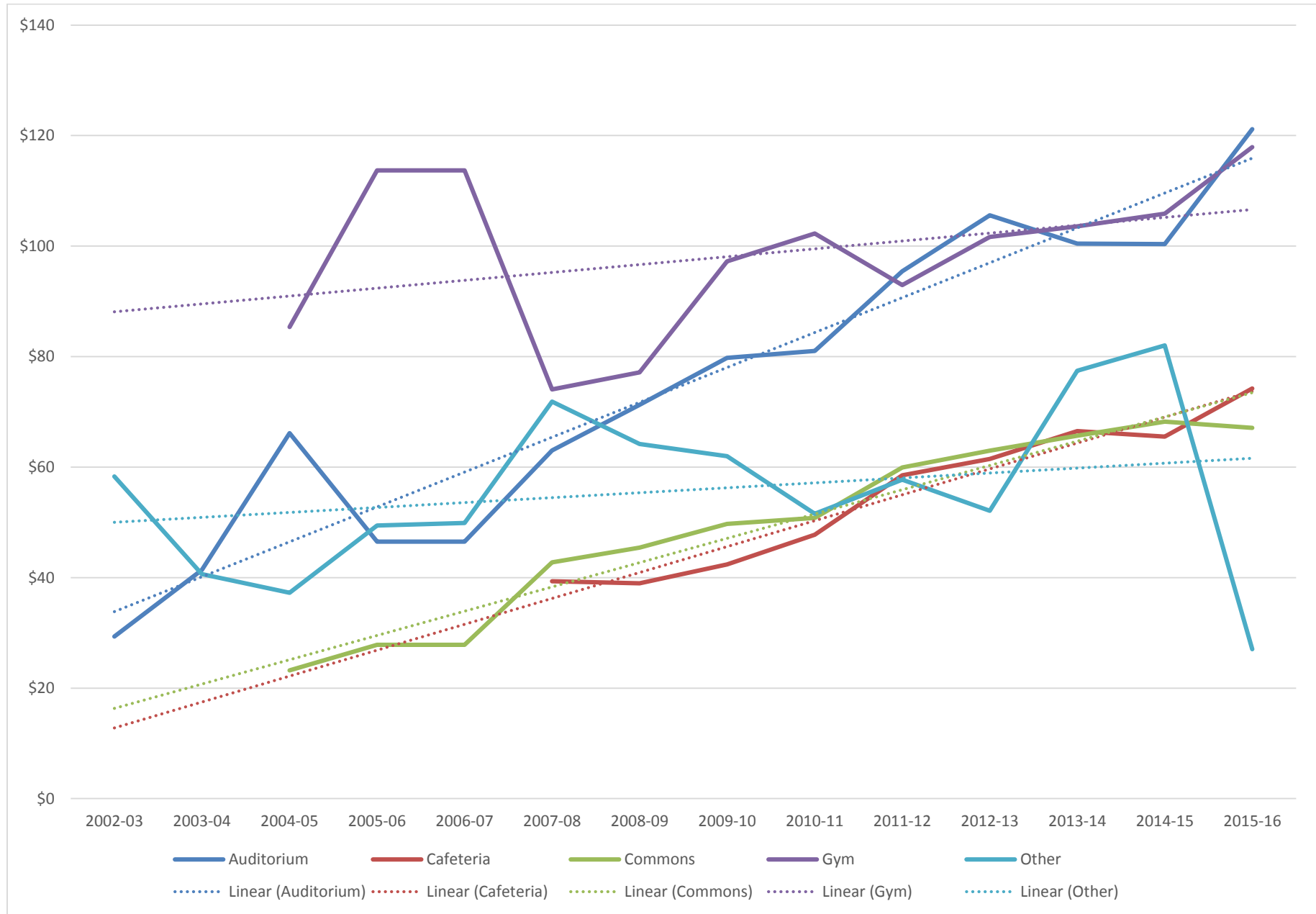


Chart 23: Fee Amounts – Shops and Labs

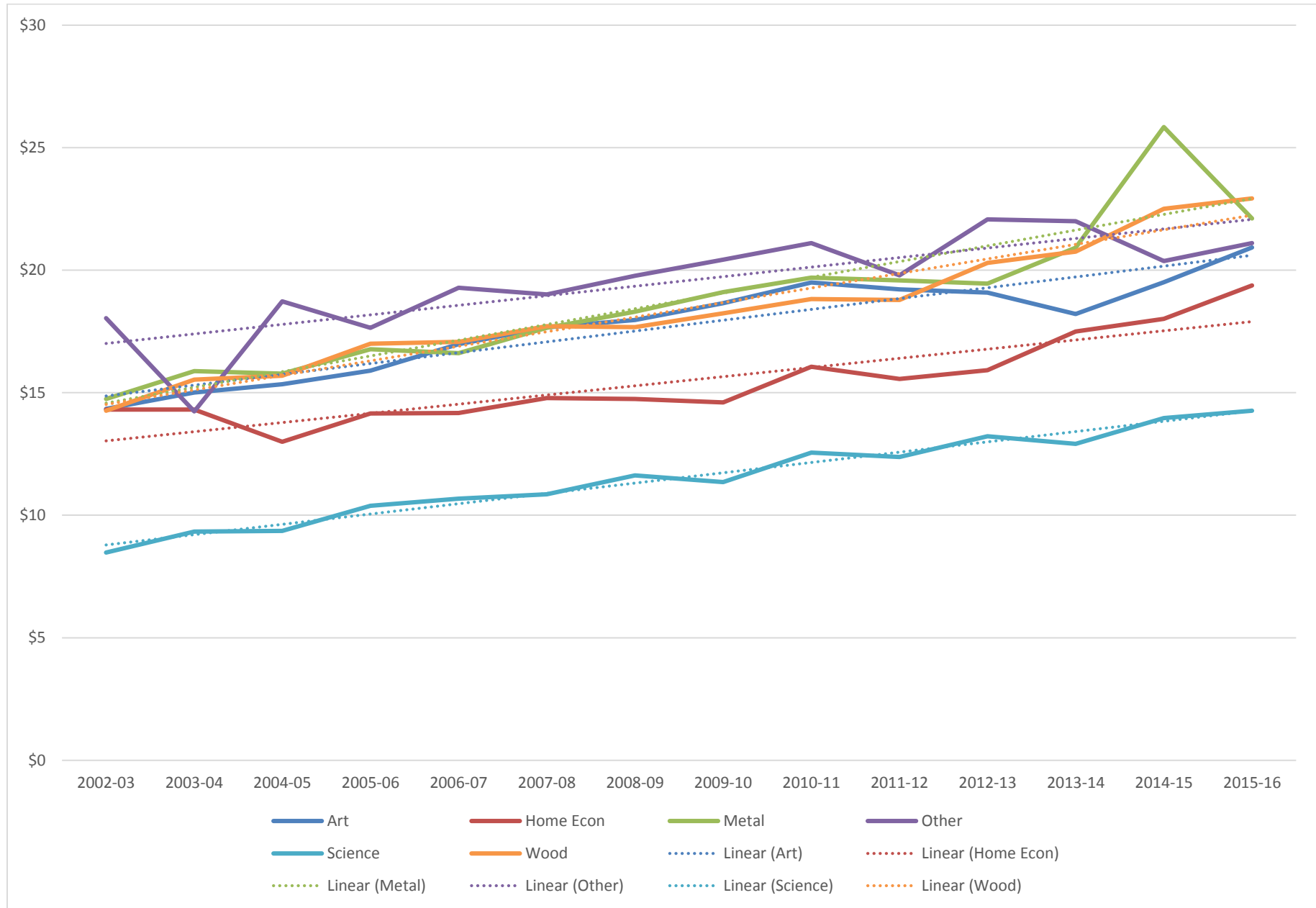


Chart 24: Fee Amounts – Publications and Textbooks

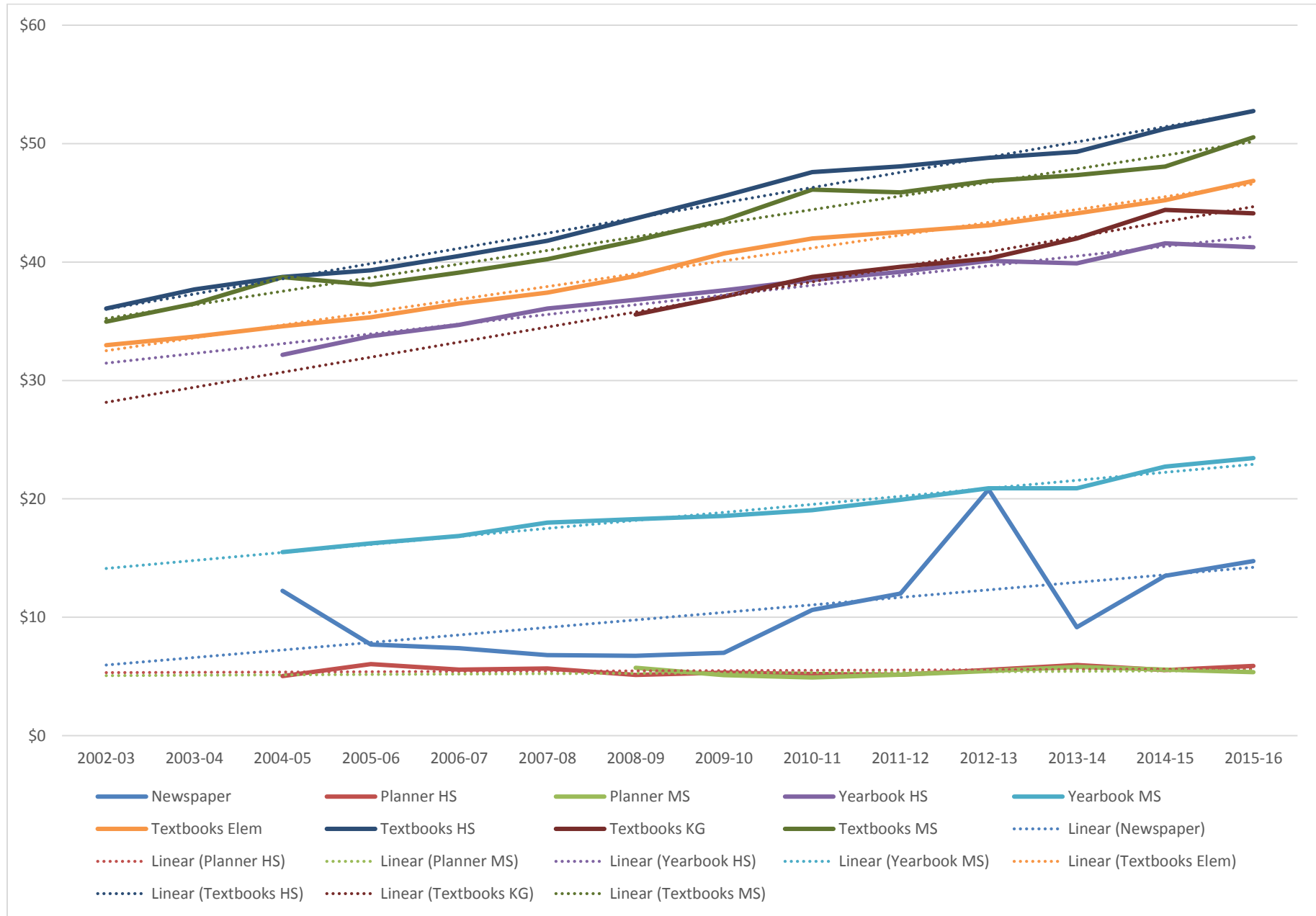


Chart 25: Fee Amounts – Uniforms

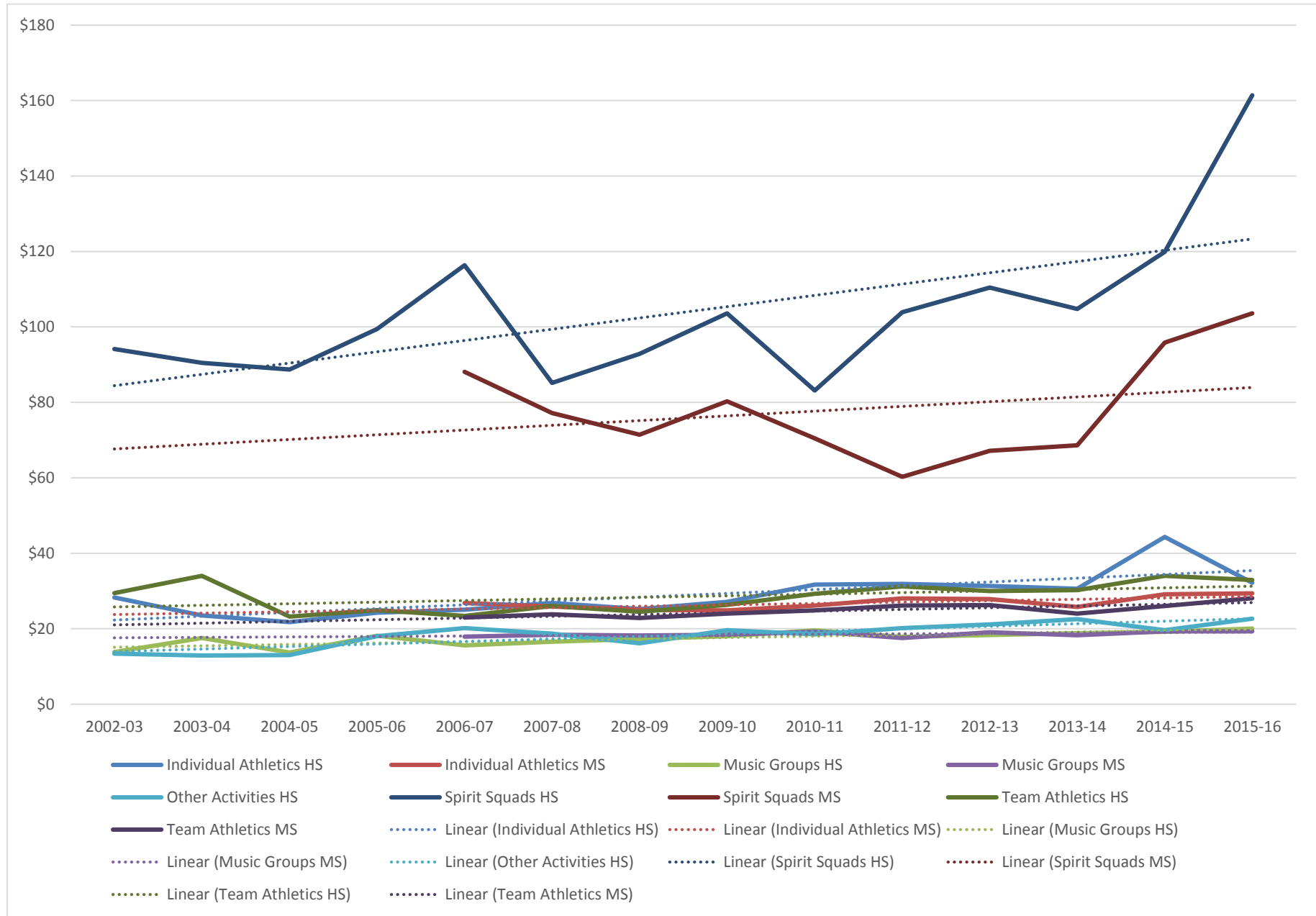


Chart 26: Fee Amounts – All Day Kindergarten

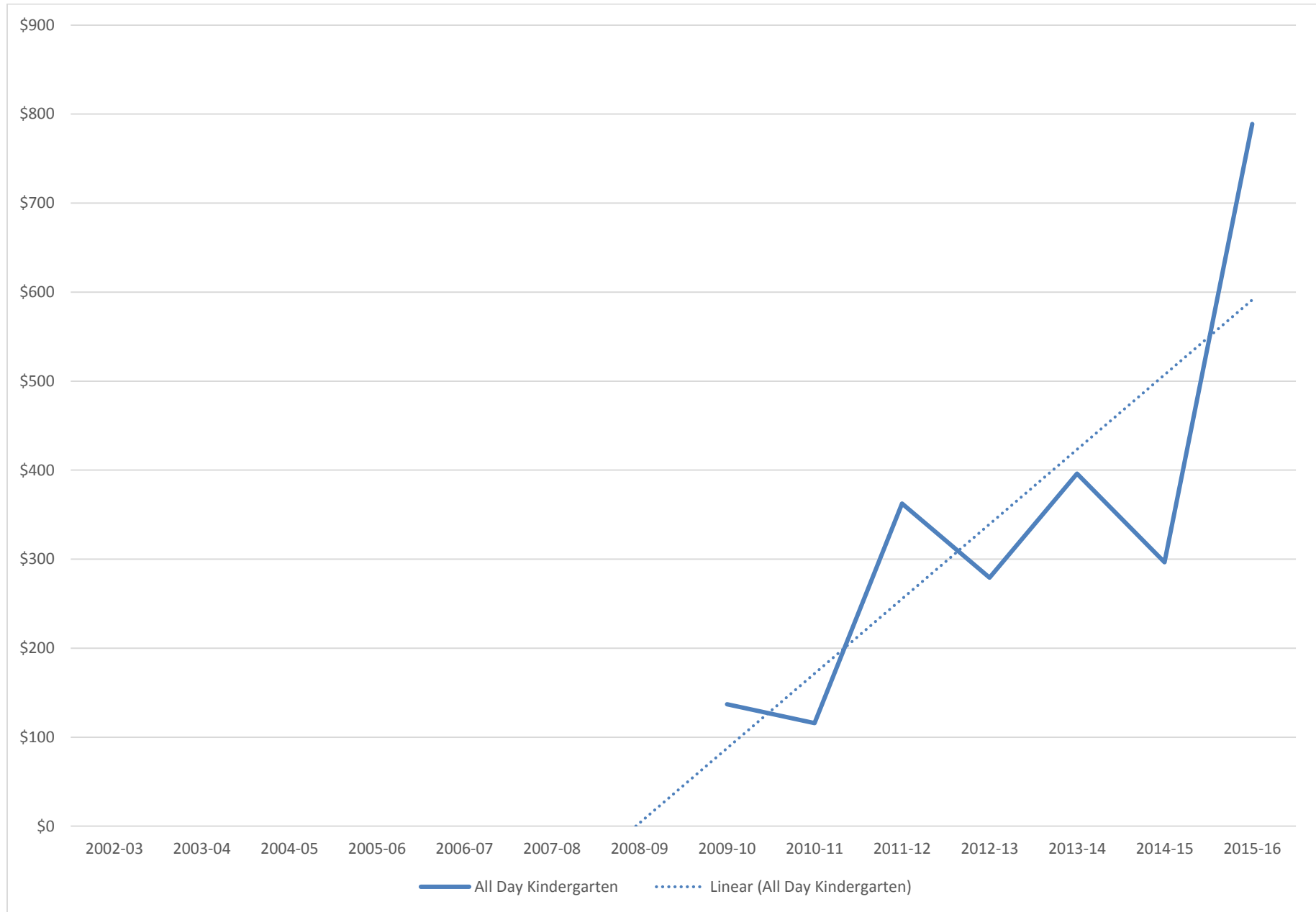
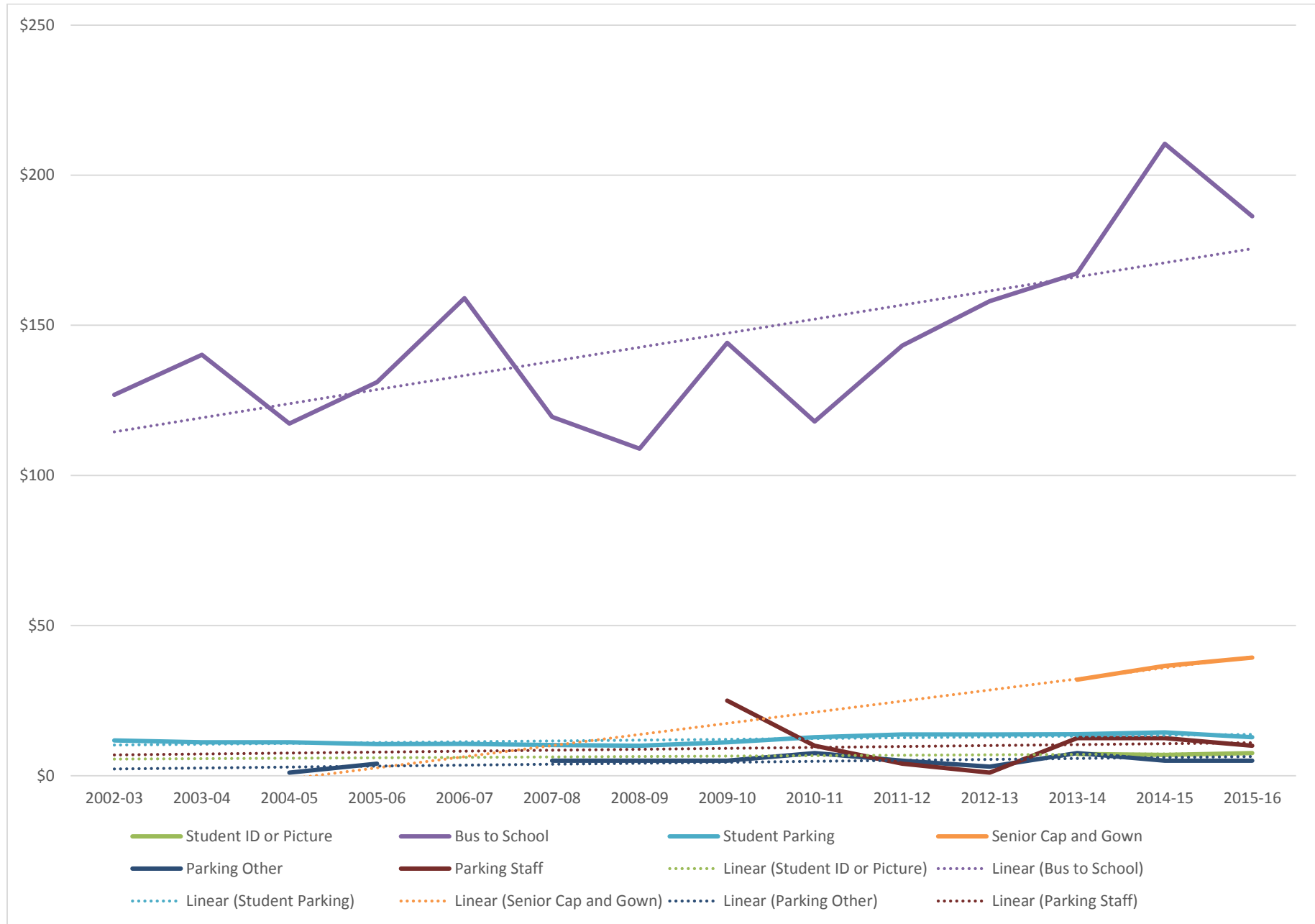


Chart 27: Fee Amounts – Other





Kansas Association of School Boards
Serving Educational Leaders, Inspiring Student Success
1420 SW Arrowhead Road * Topeka, KS 66604-4024
785-273-3600
800-432-2471
kasbresearch.org
research@kasb.org